

For Research Use Only

CEP55 Monoclonal antibody, PBS Only

Catalog Number: 67460-1-PBS

Featured Product



Basic Information

Catalog Number:

67460-1-PBS

Size:

1mg/ml

Source:

Mouse

Isotype:

IgG1

Immunogen Catalog Number:

AG29995

GenBank Accession Number:

BC008947

GeneID (NCBI):

55165

UNIPROT ID:

Q53EZ4

Full Name:

centrosomal protein 55kDa

Calculated MW:

54 kDa

Observed MW:

47-55 kDa

Purification Method:

Protein G purification

CloneNo.:

2D11F7

Applications

Tested Applications:

WB, IHC, IF/ICC, Indirect ELISA

Species Specificity:

human, mouse

Background Information

CEP55, also named as C10orf3 and URCC6, is a 55 kDa protein which located in the centrosome in interphase cells and recruited to the midbody during cytokinesis, is essential for completion of cell abscission. It plays a role in mitotic exit and cytokinesis. CEP55 has two isoforms with the MW of 47 and 55 kDa.

Storage

Storage:

Store at -80°C.

The product is shipped with ice packs. Upon receipt, store it immediately at -80°C

Storage Buffer:

PBS Only

For technical support and original validation data for this product please contact:

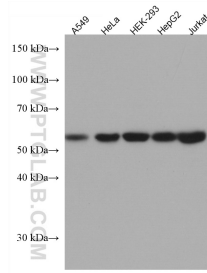
T: 4006900926

E: Proteintech-CN@ptglab.com

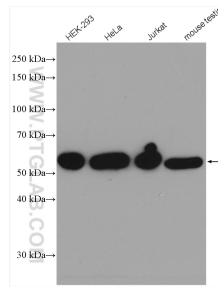
W: ptgcn.com

This product is exclusively available under Proteintech Group brand and is not available to purchase from any other manufacturer.

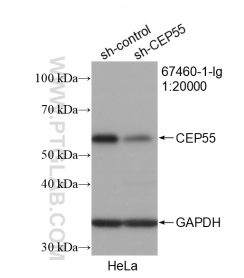
Selected Validation Data



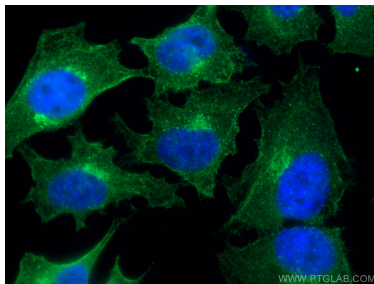
Various lysates were subjected to SDS PAGE followed by western blot with 67460-1-Ig (CEP55 antibody) at dilution of 1:15000 incubated at room temperature for 1.5 hours. This data was developed using the same antibody clone with 67460-1-PBS in a different storage buffer formulation.



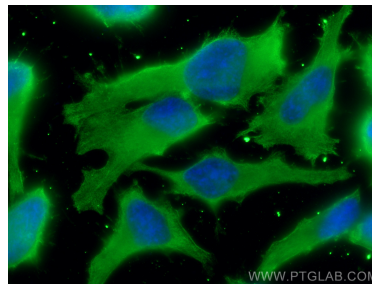
Various lysates were subjected to SDS PAGE followed by western blot with 67460-1-Ig (CEP55 antibody) at dilution of 1:15000 incubated at room temperature for 1.5 hours. This data was developed using the same antibody clone with 67460-1-PBS in a different storage buffer formulation.



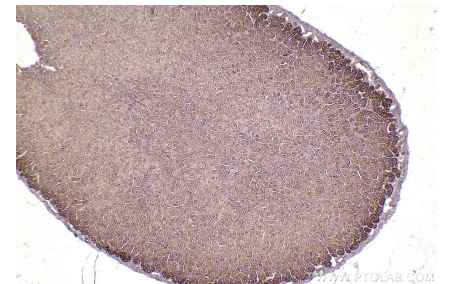
WB result of CEP55 antibody (67460-1-Ig; 1:20000; incubated at room temperature for 1.5 hours) with sh-Control and sh-CEP55 transfected HeLa cells. This data was developed using the same antibody clone with 67460-1-PBS in a different storage buffer formulation.



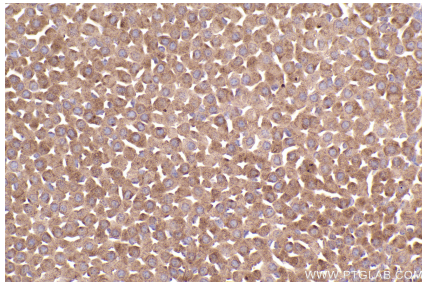
Immunofluorescent analysis of (4% PFA) fixed HeLa cells using 67460-1-Ig (CEP55 antibody), at dilution of 1:200 and CoralLite®488-Conjugated AffiniPure Goat Anti-Mouse IgG(H+L). This data was developed using the same antibody clone with 67460-1-PBS in a different storage buffer formulation.



Immunofluorescent analysis of (-20°C Ethanol) fixed HeLa cells using CEP55 antibody (67460-1-Ig, Clone: 2D11F7) at dilution of 1:800 and CoralLite®488-Conjugated AffiniPure Goat Anti-Mouse IgG(H+L). This data was developed using the same antibody clone with 67460-1-PBS in a different storage buffer formulation.



Immunohistochemical analysis of paraffin-embedded mouse adrenal gland tissue slide using 67460-1-Ig (CEP55 antibody) at dilution of 1:2000 (under 10x lens). Heat mediated antigen retrieval with Tris-EDTA buffer (pH 9.0). This data was developed using the same antibody clone with 67460-1-PBS in a different storage buffer formulation.



Immunohistochemical analysis of paraffin-embedded mouse adrenal gland tissue slide using 67460-1-Ig (CEP55 antibody) at dilution of 1:2000 (under 40x lens). Heat mediated antigen retrieval with Tris-EDTA buffer (pH 9.0). This data was developed using the same antibody clone with 67460-1-PBS in a different storage buffer formulation.