

For Research Use Only

CEP55 Monoclonal antibody

Catalog Number: 67460-1-Ig **Featured Product**



Basic Information

Catalog Number: 67460-1-Ig	GenBank Accession Number: BC008947	Purification Method: Protein G purification
Size: 2000 µg/ml	GeneID (NCBI): 55165	CloneNo.: 2D11F7
Source: Mouse	UNIPROT ID: Q53EZ4	Recommended Dilutions: WB 1:5000-1:50000 IF 1:50-1:500
Isotype: IgG1	Full Name: centrosomal protein 55kDa	
Immunogen Catalog Number: AG29995	Calculated MW: 54 kDa	
	Observed MW: 47-55 kDa	

Applications

Tested Applications: IF/ICC, WB, ELISA	Positive Controls:
Species Specificity: Human, mouse	WB : A549 cells, HeLa cells, HEK-293 cells, HepG2 cells, Jurkat cells, mouse testis tissue
	IF : HeLa cells, HepG2 cells

Background Information

CEP55, also named as C10orf3 and URCC6, is a 55 kDa protein which located in the centrosome in interphase cells and recruited to the midbody during cytokinesis, is essential for completion of cell abscission. It plays a role in mitotic exit and cytokinesis. CEP55 has two isoforms with the MW of 47 and 55 kDa.

Storage

Storage:
Store at -20°C. Stable for one year after shipment.
Storage Buffer:
PBS with 0.02% sodium azide and 50% glycerol pH 7.3.
Aliquoting is unnecessary for -20°C storage

For technical support and original validation data for this product please contact:

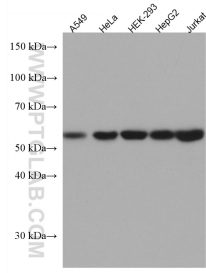
T: 4006900926

E: Proteintech-CN@ptglab.com

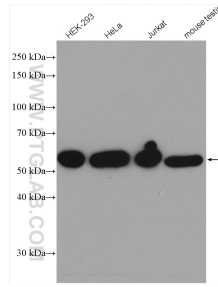
W: ptgcn.com

This product is exclusively available under Proteintech Group brand and is not available to purchase from any other manufacturer.

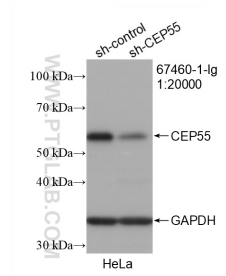
Selected Validation Data



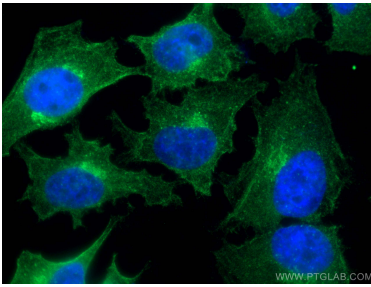
Various lysates were subjected to SDS PAGE followed by western blot with 67460-1-Ig (CEP55 antibody) at dilution of 1:15000 incubated at room temperature for 1.5 hours.



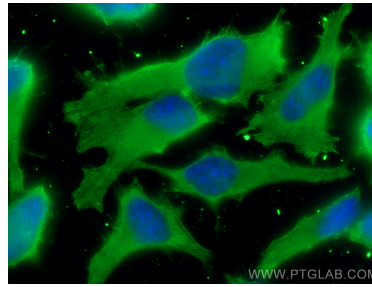
Various lysates were subjected to SDS PAGE followed by western blot with 67460-1-Ig (CEP55 antibody) at dilution of 1:15000 incubated at room temperature for 1.5 hours.



WB result of CEP55 antibody (67460-1-Ig; 1:20000; incubated at room temperature for 1.5 hours) with sh-Control and sh-CEP55 transfected HeLa cells.



Immunofluorescent analysis of (4% PFA) fixed HeLa cells using 67460-1-Ig (CEP55 antibody), at dilution of 1:200 and CoralLite® 488-Conjugated AffiniPure Goat Anti-Mouse IgG(H+L).



Immunofluorescent analysis of (-20°C Ethanol) fixed HeLa cells using CEP55 antibody (67460-1-Ig, Clone: 2D11F7) at dilution of 1:800 and CoralLite® 488-Conjugated AffiniPure Goat Anti-Mouse IgG(H+L).