

For Research Use Only

OMA1 Monoclonal antibody

Catalog Number: 67449-1-Ig



Basic Information

Catalog Number:

67449-1-Ig

Size:

1900 µg/ml

Source:

Mouse

Isotype:

IgG1

Immunogen Catalog Number:

AG11201

GenBank Accession Number:

BC012915

GeneID (NCBI):

115209

UNIPROT ID:

Q96E52

Full Name:

OMA1 homolog, zinc metallopeptidase (*S. cerevisiae*)

Calculated MW:

524 aa, 60 kDa

Observed MW:

60 kDa

Purification Method:

Protein G purification

CloneNo.:

1H4D12

Recommended Dilutions:

WB 1:1000-1:5000

Applications

Tested Applications:

WB, ELISA

Species Specificity:

Human, Mouse

Positive Controls:

WB: NIH/3T3 cells, HeLa cells, Jurkat cells, LNCaP cells, HEK-293 cells

Background Information

OMA1 (Overlapping with the m-AAA protease 1 homolog) is also named as MPRP1 (Metalloprotease-related protein 1) and belongs to the peptidase M48 family. It is a zinc metalloprotease that spans the inner mitochondrial membrane with a number of predicted membrane spanning domains and the 60 kDa form of OMA1 rapidly accumulated concomitantly with the cleavage of all OPA1 variants, and the 40 kDa form of OMA1 may be the inactive form, with the 60 kDa form being the active enzyme (PMID:20334834).

Storage

Storage:

Store at -20°C.

Storage Buffer:

PBS with 0.02% sodium azide and 50% glycerol pH 7.3.

Aliquoting is unnecessary for -20°C storage

For technical support and original validation data for this product please contact:

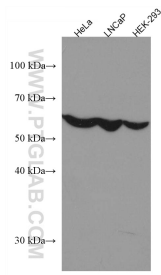
T: 4006900926

E: Proteintech-CN@ptglab.com

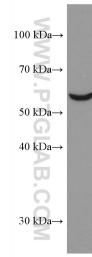
W: ptgcn.com

This product is exclusively available under Proteintech Group brand and is not available to purchase from any other manufacturer.

Selected Validation Data



Various lysates were subjected to SDS PAGE followed by western blot with 67449-1-Ig (OMA1 antibody) at dilution of 1:3000 incubated at room temperature for 1.5 hours.



NIH/3T3 cells were subjected to SDS PAGE followed by western blot with 67449-1-Ig (OMA1 antibody) at dilution of 1:3000 incubated at room temperature for 1.5 hours.