

For Research Use Only

BDH1 Monoclonal antibody

Catalog Number: 67448-1-Ig **2 Publications**



Basic Information

Catalog Number: 67448-1-Ig	GenBank Accession Number: BC005844	Purification Method: Protein G purification
Size: 2100 µg/ml	GeneID (NCBI): 622	CloneNo.: 2C3D4
Source: Mouse	UNIPROT ID: Q02338	Recommended Dilutions: WB 1:2000-1:10000 IHC 1:500-1:2000 IF 1:200-1:800
Isotype: IgG1	Full Name: 3-hydroxybutyrate dehydrogenase, type 1	
Immunogen Catalog Number: AG7864	Calculated MW: 38 kDa	
	Observed MW: 31 kDa	

Applications

Tested Applications:

IF-P, IHC, WB, ELISA

Cited Applications:

WB, IHC

Species Specificity:

Human, Mouse, Rat, Pig

Cited Species:

human, mouse

Note-IHC: suggested antigen retrieval with TE buffer pH 9.0; (*) Alternatively, antigen retrieval may be performed with citrate buffer pH 6.0

Positive Controls:

WB: pig liver tissue, HSC-T6 cells, HepG2 cells, HT-29 cells, COLO 320 cells

IHC: human liver cancer tissue,

IF: mouse liver tissue,

Background Information

BDH1 (3-hydroxybutyrate dehydrogenase, type 1) is a 343 amino acid protein that localizes to the mitochondrial matrix and belongs to the short-chain dehydrogenases/reductases (SDR) family. The deduced 343 amino acid protein contains a 46 residue leader peptide, which is cleaved to produce the mature form. It is a lipid-requiring mitochondrial enzyme with a specific requirement of phosphatidylcholine (PC).

Notable Publications

Author	Pubmed ID	Journal	Application
Yi NA Dong	36016708	PNAS Nexus	WB
Jingjing Huang	38098610	MedComm (2020)	WB, IHC

Storage

Storage:

Store at -20°C.

Storage Buffer:

PBS with 0.02% sodium azide and 50% glycerol pH 7.3.

Aliquoting is unnecessary for -20°C storage

For technical support and original validation data for this product please contact:

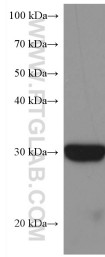
T: 4006900926

E: Proteintech-CN@ptglab.com

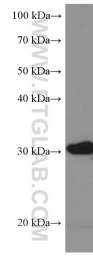
W: ptgcn.com

This product is exclusively available under Proteintech Group brand and is not available to purchase from any other manufacturer.

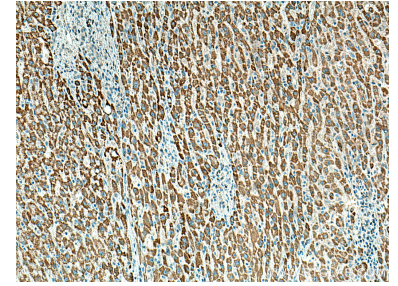
Selected Validation Data



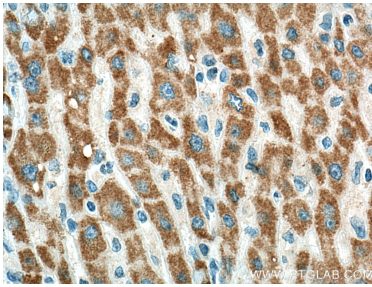
pig liver tissue were subjected to SDS PAGE followed by western blot with 67448-1-Ig (BDH1 antibody) at dilution of 1:5000 incubated at room temperature for 1.5 hours.



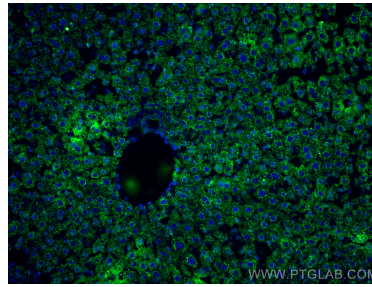
HSC-T6 cells were subjected to SDS PAGE followed by western blot with 67448-1-Ig (BDH1 antibody) at dilution of 1:5000 incubated at room temperature for 1.5 hours.



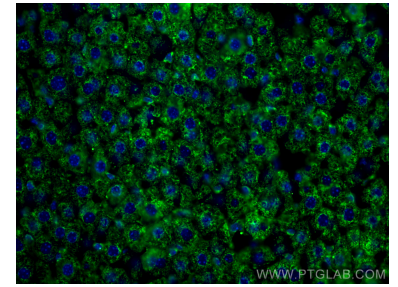
Immunohistochemical analysis of paraffin-embedded human liver cancer tissue slide using 67448-1-Ig (BDH1 antibody) at dilution of 1:1000 (under 10x lens). Heat mediated antigen retrieval with Tris-EDTA buffer (pH 9.0).



Immunohistochemical analysis of paraffin-embedded human liver cancer tissue slide using 67448-1-Ig (BDH1 antibody) at dilution of 1:1000 (under 40x lens). Heat mediated antigen retrieval with Tris-EDTA buffer (pH 9.0).



Immunofluorescent analysis of (4% PFA) fixed mouse liver tissue using BDH1 antibody (67448-1-Ig, Clone: 2C3D4) at dilution of 1:400 and CoraLite@488-Conjugated AffiniPure Goat Anti-Mouse IgG(H+L).



Immunofluorescent analysis of (4% PFA) fixed mouse liver tissue using BDH1 antibody (67448-1-Ig, Clone: 2C3D4) at dilution of 1:400 and CoraLite@488-Conjugated AffiniPure Goat Anti-Mouse IgG(H+L).