

MCM7 Monoclonal antibody

Catalog Number: 67446-1-Ig

Basic Information

Catalog Number:

67446-1-Ig

Size:

1100 µg/ml

Source:

Mouse

Isotype:

IgG1

Immunogen Catalog Number:

AG28558

GenBank Accession Number:

BC013375

GeneID (NCBI):

4176

UNIPROT ID:

P33993

Full Name:

minichromosome maintenance complex component 7

Calculated MW:

81 kDa

Observed MW:

85 kDa

Purification Method:

Protein G purification

CloneNo.:

1G1F6

Recommended Dilutions:

WB 1:5000-1:50000

IP 0.5-4.0 µg for 1.0-3.0 mg of total protein lysate

IHC 1:1000-1:4000

Applications

Tested Applications:

IHC, IP, WB, ELISA

Species Specificity:

Human, mouse, rat

Note-IHC: suggested antigen retrieval with TE buffer pH 9.0; (*) Alternatively, antigen retrieval may be performed with citrate buffer pH 6.0

Positive Controls:

WB : A431 cells, HeLa cells, Jurkat cells, K-562 cells, HSC-T6 cells, NIH/3T3 cells, 4T1 cells

IP : HeLa cells,

IHC : human breast cancer tissue, human lung cancer tissue

Background Information

MCM7, also named as CDC47 homolog or P1.1-MCM3, is a 719 amino acid protein, which belongs to the MCM family. MCM7 acts as component of the MCM2-7 complex (MCM complex) which is the putative replicative helicase essential for 'once per cell cycle' DNA replication initiation and elongation in eukaryotic cells. the MCM2-7 complex participates in the pre-replication complex formation and exhibits helicase activity which makes DNA unwind, and resulting in recruitment of DNA polymerases and initiation of DNA replication and elongation [PMID: 29463213]. An immunohistochemical study has shown that MCM7 is increased in HCC. Silencing of MCM7 with shRNA inhibits the malignant behavior of HCC cells via cell cycle arrest and apoptosis [[PMID: 29463213].

Storage

Storage:

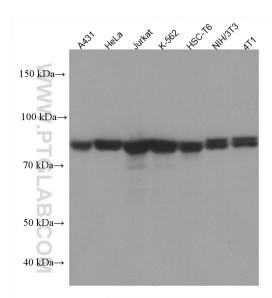
Store at -20°C. Stable for one year after shipment.

Storage Buffer:

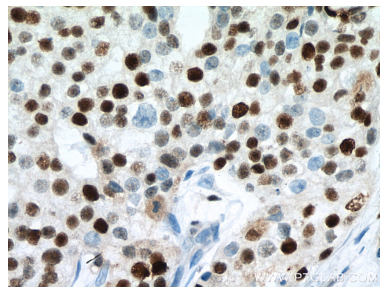
PBS with 0.02% sodium azide and 50% glycerol pH 7.3.

Aliquoting is unnecessary for -20°C storage

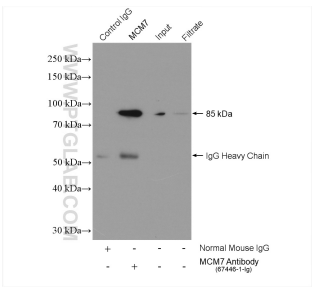
Selected Validation Data



Various lysates were subjected to SDS PAGE followed by western blot with 67446-1-Ig (MCM7 antibody) at dilution of 1:20000 incubated at room temperature for 1.5 hours.



Immunohistochemical analysis of paraffin-embedded human breast cancer tissue slide using 67446-1-Ig (MCM7 antibody) at dilution of 1:2000 (under 40x lens). Heat mediated antigen retrieval with Tris-EDTA buffer (pH 9.0).



IP result of anti-MCM7 (IP:67446-1-Ig, 4ug; Detection:67446-1-Ig 1:2000) with HeLa cells lysate 1040 ug.