

MTH1 Monoclonal antibody

Catalog Number: 67443-1-Ig **1 Publications**

Basic Information

Catalog Number: 67443-1-Ig	GenBank Accession Number: BC014618	Purification Method: Protein G purification
Concentration: 2000 ug/ml	GeneID (NCBI): 4521	CloneNo.: 2D7G4
Source: Mouse	UNIPROT ID: P36639	Recommended Dilutions: WB 1:2000-1:10000 IHC 1:2000-1:8000
Isotype: IgG1	Full Name: nudix (nucleoside diphosphate linked moiety X)-type motif 1	
Immunogen Catalog Number: AG9802	Calculated MW: 179aa, 20 kDa; 197aa, 23 kDa	
	Observed MW: 19 kDa	

Applications

Tested Applications: WB, IHC, ELISA	Positive Controls:
Cited Applications: WB	WB : HeLa cells, HEK-293 cells, HepG2 cells, Jurkat cells, K-562 cells
Species Specificity: human, mouse	IHC : human renal cell carcinoma tissue, mouse testis tissue, human colon cancer tissue, human lung cancer tissue
Cited Species: human	
Note-IHC: suggested antigen retrieval with TE buffer pH 9.0; (*) Alternatively, antigen retrieval may be performed with citrate buffer pH 6.0	

Background Information

MTH1, also known as NUDT1 or 8-Oxo-dGTPase, is an important repair enzyme that prevents oxidative stress-induced DNA damage through hydrolyzing mutagenic 8-oxo-dGTP into 8-oxo-dGMP. MTH1 is expressed in postmitotic neurons as well as in proliferative tissues, and it is localized both in the mitochondria and nucleus. MTH1 might be a useful marker of oxidative stress and its level increased upon oxidative stress. Increased expression of MTH1 were also found in various cancer tissues and neurodegenerative diseases.

Notable Publications

Author	Pubmed ID	Journal	Application
Nicholas C K Valerie	39643609	Nat Commun	WB

Storage

Storage:
Store at -20°C. Stable for one year after shipment.
Storage Buffer:
PBS with 0.02% sodium azide and 50% glycerol, pH7.3
 Aliquoting is unnecessary for -20°C storage

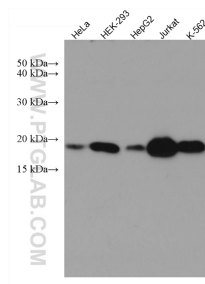
For technical support and original validation data for this product please contact:

T: 4006900926

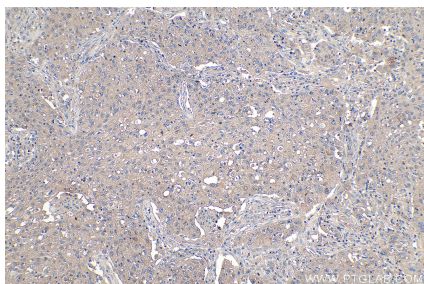
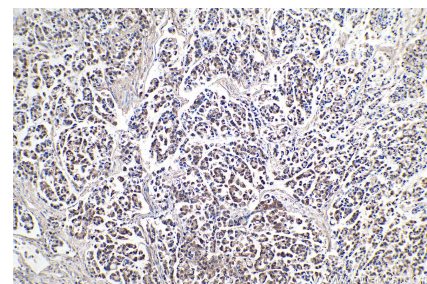
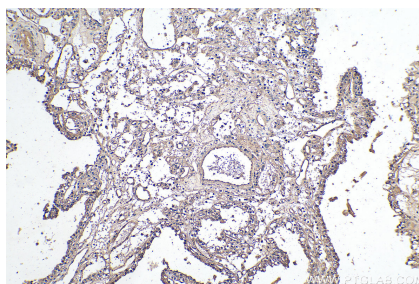
E: Proteintech-CN@ptglab.comW: ptgcn.com

This product is exclusively available under Proteintech Group brand and is not available to purchase from any other manufacturer.

Selected Validation Data



Various lysates were subjected to SDS PAGE followed by western blot with 67443-1-Ig (MTH1 antibody) at dilution of 1:5000 incubated at room temperature for 1.5 hours.



Immunohistochemical analysis of paraffin-embedded human lung cancer tissue slide using 67443-1-Ig (MTH1 antibody) at dilution of 1:4000 (under 10x lens). Heat mediated antigen retrieval with Tris-EDTA buffer (pH 9.0).