

For Research Use Only

PROX1 Monoclonal antibody, PBS Only

Catalog Number: 67438-1-PBS



Basic Information

Catalog Number:

67438-1-PBS

Concentration:

1mg/ml

Source:

Mouse

Isotype:

IgG2b

Immunogen Catalog Number:

AG9681

GenBank Accession Number:

BC024201

GeneID (NCBI):

5629

UNIPROT ID:

Q92786

Full Name:

prospero homeobox 1

Calculated MW:

737 aa, 83 kDa

Observed MW:

90 kDa

Purification Method:

Protein A purification

CloneNo.:

1D4B1

Applications

Tested Applications:

WB, IHC, IF/ICC, Indirect ELISA

Species Specificity:

human, rat

Background Information

PROX1, Prospero homeobox protein 1, belongs to the Prospero homeobox family and contain a Prospero-type homeobox DNA-binding domain. PROX1 plays a fundamental role in early development of CNS and regulates the expression of gene and development of postmitotic, undifferentiated neurons. Also, PROX1 is a required regulator of the development of the lymphatic system. This antibody is raised against part of C-terminal chain of human PROX1. The calculated molecular weight of PROX1 is 83 kDa, but with post-translational modifications, PROX1 is about 90 kDa.

Storage

Storage:

Store at -80°C.

The product is shipped with ice packs. Upon receipt, store it immediately at -80°C

Storage Buffer:

PBS only, pH7.3

For technical support and original validation data for this product please contact:

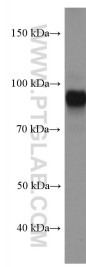
T: 4006900926

E: Proteintech-CN@ptglab.com

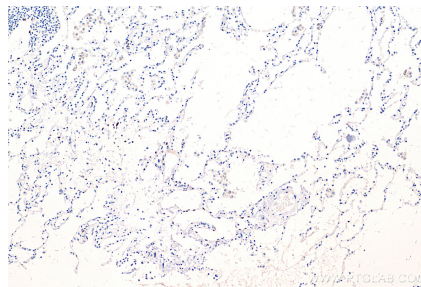
W: ptgcn.com

This product is exclusively available under Proteintech Group brand and is not available to purchase from any other manufacturer.

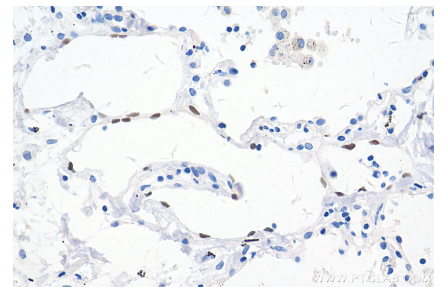
Selected Validation Data



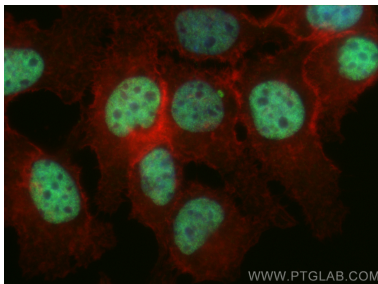
HuH-7 cells were subjected to SDS PAGE followed by western blot with 67438-1-Ig (PROX1 antibody) at dilution of 1:3000 incubated at room temperature for 1.5 hours. This data was developed using the same antibody clone with 67438-1-PBS in a different storage buffer formulation.



Immunohistochemical analysis of paraffin-embedded human lung cancer tissue slide using 67438-1-Ig (PROX1 antibody) at dilution of 1:4000 (under 10x lens). Heat mediated antigen retrieval with Tris-EDTA buffer (pH 9.0). This data was developed using the same antibody clone with 67438-1-PBS in a different storage buffer formulation.



Immunohistochemical analysis of paraffin-embedded human lung cancer tissue slide using 67438-1-Ig (PROX1 antibody) at dilution of 1:4000 (under 40x lens). Heat mediated antigen retrieval with Tris-EDTA buffer (pH 9.0). This data was developed using the same antibody clone with 67438-1-PBS in a different storage buffer formulation.



Immunofluorescent analysis of (4% PFA) fixed HuH-7 cells using PROX1 antibody (67438-1-Ig, Clone: 1D4B1) at dilution of 1:800 and CoraLite@488-Conjugated Goat Anti-Mouse IgG(H+L) (SA00013-1), CL594-Phalloidin (red). This data was developed using the same antibody clone with 67438-1-PBS in a different storage buffer formulation.