

For Research Use Only

# PROX1 Monoclonal antibody

Catalog Number: 67438-1-Ig **1 Publications**



## Basic Information

Catalog Number: 67438-1-Ig	GenBank Accession Number: BC024201	Purification Method: Protein A purification
Concentration: 2000 ug/ml	GeneID (NCBI): 5629	CloneNo.: 1D4B1
Source: Mouse	UNIPROT ID: Q92786	Recommended Dilutions: WB 1:1000-1:6000 IHC 1:2000-1:8000 IF/ICC 1:400-1:1600
Isotype: IgG2b	Full Name: prospero homeobox 1	
Immunogen Catalog Number: AG9681	Calculated MW: 737 aa, 83 kDa Observed MW: 90 kDa	

## Applications

Tested Applications: WB, IHC, IF/ICC, ELISA	Positive Controls: WB : HuH-7 cells, rat liver tissue IHC : human lung cancer tissue, IF/ICC : HuH-7 cells,
Species Specificity: human, rat	
<b>Note-IHC: suggested antigen retrieval with TE buffer pH 9.0; (*) Alternatively, antigen retrieval may be performed with citrate buffer pH 6.0</b>	

## Background Information

PROX1, Prospero homeobox protein 1, belongs to the Prospero homeobox family and contain a Prospero-type homeobox DNA-binding domain. PROX1 plays a fundamental role in early development of CNS and regulates the expression of gene and development of postmitotic, undifferentiated neurons. Also, PROX1 is a required regulator of the development of the lymphatic system. This antibody is raised against part of C-terminal chain of human PROX1. The calculated molecular weight of PROX1 is 83 kDa, but with post-translational modifications, PROX1 is about 90 kDa.

## Notable Publications

Author	Pubmed ID	Journal	Application
Wenxiu Dai	38272027	Dev Cell	

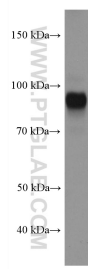
## Storage

Storage:  
Store at -20°C. Stable for one year after shipment.  
Storage Buffer:  
PBS with 0.02% sodium azide and 50% glycerol, pH7.3  
Aliquoting is unnecessary for -20°C storage

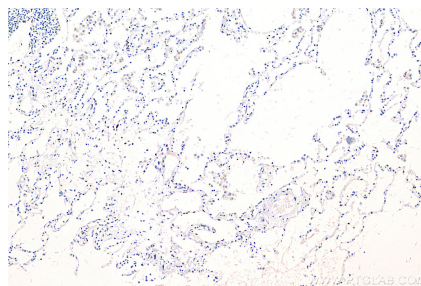
For technical support and original validation data for this product please contact:  
T: 4006900926 E: Proteintech-CN@ptglab.com W: ptgcn.com

This product is exclusively available under Proteintech Group brand and is not available to purchase from any other manufacturer.

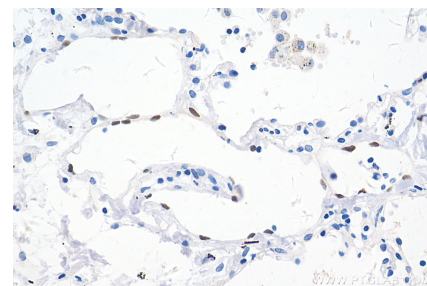
## Selected Validation Data



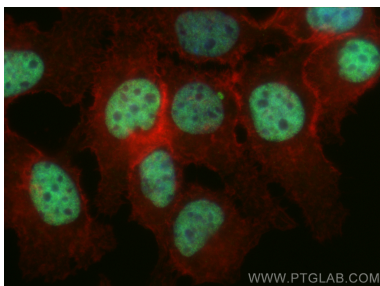
HuH-7 cells were subjected to SDS PAGE followed by western blot with 67438-1-Ig (PROX1 antibody) at dilution of 1:3000 incubated at room temperature for 1.5 hours.



Immunohistochemical analysis of paraffin-embedded human lung cancer tissue slide using 67438-1-Ig (PROX1 antibody) at dilution of 1:4000 (under 10x lens). Heat mediated antigen retrieval with Tris-EDTA buffer (pH 9.0).



Immunohistochemical analysis of paraffin-embedded human lung cancer tissue slide using 67438-1-Ig (PROX1 antibody) at dilution of 1:4000 (under 40x lens). Heat mediated antigen retrieval with Tris-EDTA buffer (pH 9.0).



Immunofluorescent analysis of (4% PFA) fixed HuH-7 cells using PROX1 antibody (67438-1-Ig, Clone: 1D4B1 ) at dilution of 1:800 and CoraLite®488-Conjugated Goat Anti-Mouse IgG(H+L) (SA00013-1), CL594-Phalloidin (red).