

For Research Use Only

# LIPG Monoclonal antibody

Catalog Number: 67434-1-Ig **1 Publications**



## Basic Information

Catalog Number: 67434-1-Ig	GenBank Accession Number: BC060825	Purification Method: Protein G purification
Size: 2000 µg/ml	GeneID (NCBI): 9388	CloneNo.: 1B10B10
Source: Mouse	UNIPROT ID: Q9Y5X9	Recommended Dilutions: WB 1:2000-1:16000 IHC 1:200-1:800
Isotype: IgG1	Full Name: lipase, endothelial	
Immunogen Catalog Number: AG29482	Calculated MW: 57 kDa Observed MW: 57 and 42 kDa	

## Applications

Tested Applications: IHC, WB, ELISA	Positive Controls:
Cited Applications: WB, IHC, CoIP	WB : Caco-2 cells, HaCaT cells, HepG2 cells, HT-29 cells, human placenta tissue, MCF-7 cells, MDA-MB-468 cells
Species Specificity: Human	IHC : human prostate cancer tissue,
Cited Species: human	
<b>Note-IHC: suggested antigen retrieval with TE buffer pH 9.0; (*) Alternatively, antigen retrieval may be performed with citrate buffer pH 6.0</b>	

## Background Information

### Notable Publications

Author	Pubmed ID	Journal	Application
Qun Zhang	39069526	Cancer Gene Ther	WB,IHC,CoIP

## Storage

Storage:  
Store at -20°C. Stable for one year after shipment.  
Storage Buffer:  
PBS with 0.02% sodium azide and 50% glycerol pH 7.3.  
Aliquoting is unnecessary for -20°C storage

For technical support and original validation data for this product please contact:

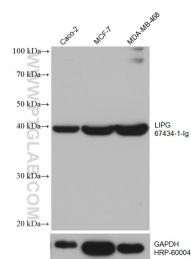
T: 4006900926

E: Proteintech-CN@ptglab.com

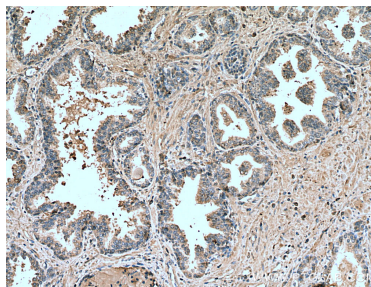
W: ptgcn.com

This product is exclusively available under Proteintech Group brand and is not available to purchase from any other manufacturer.

## Selected Validation Data



Various lysates were subjected to SDS PAGE followed by western blot with 67434-1-Ig (LIPG antibody) at dilution of 1:8000 incubated at room temperature for 1.5 hours. The membrane was stripped and reblotted with HRP-conjugated GAPDH Monoclonal antibody (HRP-60004) as loading control.



Immunohistochemical analysis of paraffin-embedded human prostate cancer tissue slide using 67434-1-Ig (LIPG antibody) at dilution of 1:400 (under 10x lens). Heat mediated antigen retrieval with Tris-EDTA buffer (pH 9.0).