

CYP20A1 Monoclonal antibody

Catalog Number: 67433-1-Ig

Basic Information

Catalog Number:

67433-1-Ig

Size:

500 µg/ml

Source:

Mouse

Isotype:

IgG1

Immunogen Catalog Number:

AG9715

GenBank Accession Number:

BC020616

GeneID (NCBI):

57404

UNIPROT ID:

Q6UW02

Full Name:

cytochrome P450, family 20,
subfamily A, polypeptide 1

Calculated MW:

462 aa, 52 kDa

Observed MW:

49-52 kDa

Purification Method:

Protein G purification

CloneNo.:

2A9E2

Recommended Dilutions:

WB 1:5000-1:50000

IHC 1:250-1:1000

IF/ICC 1:200-1:800

Applications

Tested Applications:

IF/ICC, IHC, WB, ELISA

Species Specificity:

Human, Mouse, Rat

**Note-IHC: suggested antigen retrieval with
TE buffer pH 9.0; (*) Alternatively, antigen
retrieval may be performed with citrate
buffer pH 6.0**

Positive Controls:

WB : LNCaP cells, HeLa cells, HEK-293 cells, HepG2
cells, Jurkat cells, HSC-T6 cells, NIH/3T3 cells, 4T1
cells, K-562 cells, Neuro-2a cells

IHC : human liver cancer tissue,

IF/ICC : HeLa cells,

Background Information

Storage

Storage:

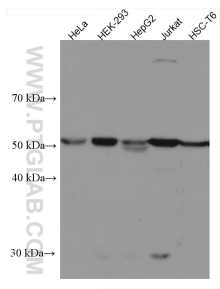
Store at -20°C. Stable for one year after shipment.

Storage Buffer:

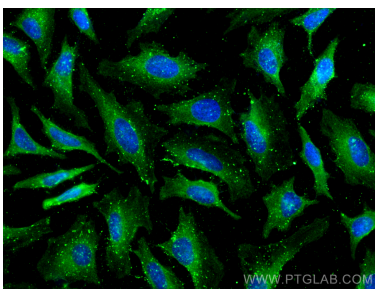
PBS with 0.02% sodium azide and 50% glycerol pH 7.3.

Aliquoting is unnecessary for -20°C storage

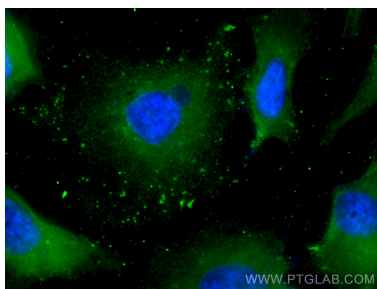
Selected Validation Data



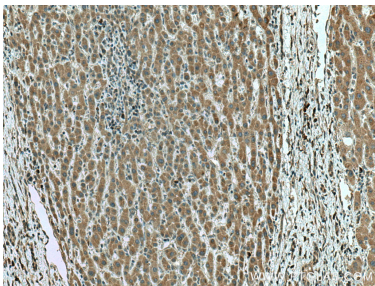
Various lysates were subjected to SDS PAGE followed by western blot with 67433-1-Ig (CYP20A1 antibody) at dilution of 1:5000 incubated at room temperature for 1.5 hours.



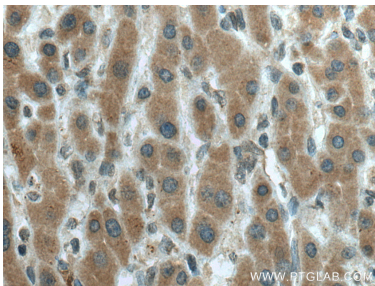
Immunofluorescent analysis of (-20°C Methanol) fixed HeLa cells using CYP20A1 antibody (67433-1-Ig, Clone: 2A9E2) at dilution of 1:400 and CoraLite®488-Conjugated AffiniPure Goat Anti-Mouse IgG(H+L).



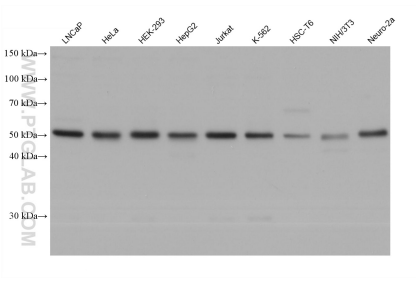
Immunofluorescent analysis of (-20°C Methanol) fixed HeLa cells using CYP20A1 antibody (67433-1-Ig, Clone: 2A9E2) at dilution of 1:400 and CoraLite®488-Conjugated AffiniPure Goat Anti-Mouse IgG(H+L).



Immunohistochemical analysis of paraffin-embedded human liver cancer tissue slide using 67433-1-Ig (CYP20A1 antibody) at dilution of 1:500 (under 10x lens). Heat mediated antigen retrieval with Tris-EDTA buffer (pH 9.0).



Immunohistochemical analysis of paraffin-embedded human liver cancer tissue slide using 67433-1-Ig (CYP20A1 antibody) at dilution of 1:500 (under 40x lens). Heat mediated antigen retrieval with Tris-EDTA buffer (pH 9.0).



Various lysates were subjected to SDS PAGE followed by western blot with 67433-1-Ig (CYP20A1 antibody) at dilution of 1:20000 incubated at room temperature for 1.5 hours.