

AMPD2 Monoclonal antibody

Catalog Number: 67430-1-Ig

Basic Information

Catalog Number:

67430-1-Ig

Size:

1900 µg/ml

Source:

Mouse

Isotype:

IgG2b

Immunogen Catalog Number:

AG8433

GenBank Accession Number:

BC007711

GeneID (NCBI):

271

UNIPROT ID:

Q01433

Full Name:

adenosine monophosphate
deaminase 2 (isoform L)

Calculated MW:

879aa, 101 kDa; 798aa, 92 kDa

Observed MW:

101 kDa

Purification Method:

Protein A purification

CloneNo.:

2C4C1

Recommended Dilutions:

WB 1:3000-1:20000

IHC 1:500-1:2000

IF/ICC 1:200-1:800

Applications

Tested Applications:

IF/ICC, IHC, WB, ELISA

Species Specificity:

Human, Mouse, Rat

**Note-IHC: suggested antigen retrieval with
TE buffer pH 9.0; (*) Alternatively, antigen
retrieval may be performed with citrate
buffer pH 6.0**

Positive Controls:

WB : HSC-T6 cells, 4T1 cells, HeLa cells, HepG2 cells,
L02 cells, Neuro-2a cells

IHC : human liver cancer tissue,

IF/ICC : HepG2 cells,

Background Information

Adenosine monophosphate deaminase (AMPD) catalyzes the deamination of AMP to IMP and plays an important role in the purine nucleotide cycle. Three AMPDs are present in mammals named AMPD1/2/3. AMPD2 is the main activity present in adult human liver and is widely expressed in non-muscle tissues and cells (PMID: 8526848). AMPD2 has some isoforms with the molecular mass of 88-101 kDa.

Storage

Storage:

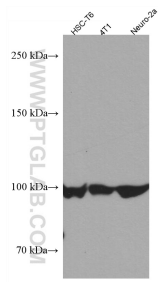
Store at -20°C.

Storage Buffer:

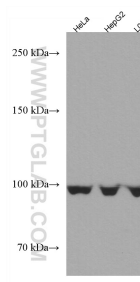
PBS with 0.02% sodium azide and 50% glycerol pH 7.3.

Aliquoting is unnecessary for -20°C storage

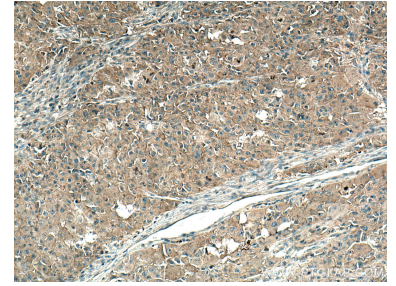
Selected Validation Data



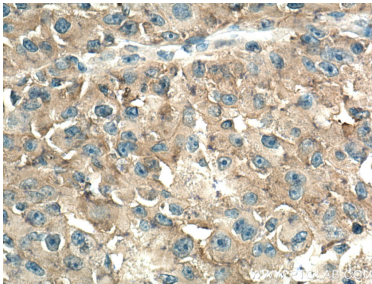
HSC-T6 cells were subjected to SDS PAGE followed by western blot with 67430-1-Ig (AMPD2 antibody) at dilution of 1:10000 incubated at room temperature for 1.5 hours.



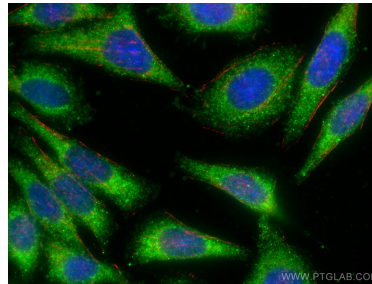
Various lysates were subjected to SDS PAGE followed by western blot with 67430-1-Ig (AMPD2 antibody) at dilution of 1:10000 incubated at room temperature for 1.5 hours.



Immunohistochemical analysis of paraffin-embedded human liver cancer tissue slide using 67430-1-Ig (AMPD2 antibody) at dilution of 1:1000 (under 10x lens). Heat mediated antigen retrieval with Tris-EDTA buffer (pH 9.0).



Immunohistochemical analysis of paraffin-embedded human liver cancer tissue slide using 67430-1-Ig (AMPD2 antibody) at dilution of 1:1000 (under 40x lens). Heat mediated antigen retrieval with Tris-EDTA buffer (pH 9.0).



Immunofluorescent analysis of (-20°C Ethanol) fixed HepG2 cells using AMPD2 antibody (67430-1-Ig, Clone: 2C4C1) at dilution of 1:400 and CoraLite® 488-Conjugated AffiniPure Goat Anti-Mouse IgG(H+L), CL594-Phalloidin (red).