

For Research Use Only

ERP44 Monoclonal antibody

Catalog Number: 67426-1-Ig



Basic Information

Catalog Number: 67426-1-Ig	GenBank Accession Number: BC005374	Purification Method: Protein G purification
Size: 900 µg/ml	GeneID (NCBI): 23071	CloneNo.: 3A2C1
Source: Mouse	UNIPROT ID: Q9BS26	Recommended Dilutions: WB 1:5000-1:50000 IHC 1:500-1:2000
Isotype: IgG1	Full Name: endoplasmic reticulum protein 44	
Immunogen Catalog Number: AG8818	Calculated MW: 406 aa, 47 kDa	
	Observed MW: 44-47 kDa	

Applications

Tested Applications:

IHC, WB, ELISA

Species Specificity:

Human, Mouse, Rat

Note-IHC: suggested antigen retrieval with TE buffer pH 9.0; (*) Alternatively, antigen retrieval may be performed with citrate buffer pH 6.0

Positive Controls:

WB: HeLa cells, HSC-T6 cells, HEK-293 cells, HepG2 cells, Jurkat cells, NIH/3T3 cells, 4T1 cells

IHC: human breast cancer tissue, human liver cancer tissue

Background Information

TXNDC4 is also named as KIAA0573, ERP44, PDIA10, ERp44 and belongs to the thioredoxin family (TRX). It may be involved in electron transport, protein folding, response to unfolded protein, glycoprotein metabolism, secretory pathway. It may have a role in the control of oxidative protein folding in the endoplasmic reticulum.

Storage

Storage:

Store at -20°C.

Storage Buffer:

PBS with 0.02% sodium azide and 50% glycerol pH 7.3.

Aliquoting is unnecessary for -20°C storage

For technical support and original validation data for this product please contact:

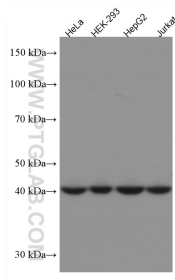
T: 4006900926

E: Proteintech-CN@ptglab.com

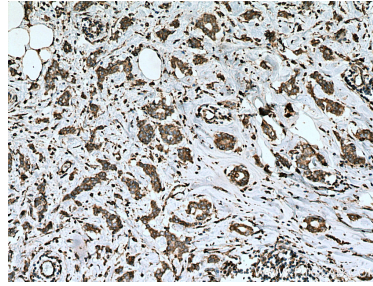
W: ptgcn.com

This product is exclusively available under Proteintech Group brand and is not available to purchase from any other manufacturer.

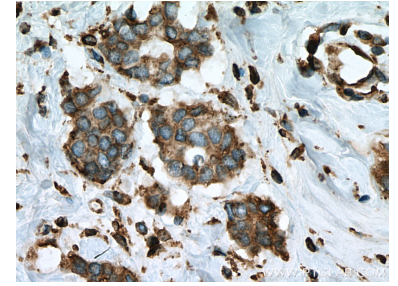
Selected Validation Data



Various lysates were subjected to SDS PAGE followed by western blot with 67426-1-Ig (ERP44 antibody) at dilution of 1:10000 incubated at room temperature for 1.5 hours.



Immunohistochemical analysis of paraffin-embedded human breast cancer tissue slide using 67426-1-Ig (ERP44 antibody) at dilution of 1:1000 (under 10x lens). Heat mediated antigen retrieval with Tris-EDTA buffer (pH 9.0).



Immunohistochemical analysis of paraffin-embedded human breast cancer tissue slide using 67426-1-Ig (ERP44 antibody) at dilution of 1:1000 (under 40x lens). Heat mediated antigen retrieval with Tris-EDTA buffer (pH 9.0).