

For Research Use Only

CYP2W1 Monoclonal antibody, PBS Only



Catalog Number: 67419-1-PBS

Featured Product

Basic Information

Catalog Number:

67419-1-PBS

Size:

1mg/ml

Source:

Mouse

Isotype:

IgG1

Immunogen Catalog Number:

AG29982

GenBank Accession Number:

BC025761

GeneID (NCBI):

54905

UNIPROT ID:

Q8TAV3

Full Name:

cytochrome P450, family 2, subfamily W, polypeptide 1

Calculated MW:

54 kDa

Observed MW:

45-54 kDa

Purification Method:

Protein G purification

CloneNo.:

2B10H2

Applications

Tested Applications:

WB, IF/ICC, FC (Intra), Indirect ELISA

Species Specificity:

human, mouse, rat

Background Information

Cytochrome P450s have been proposed to be of importance both in carcinogenesis, by activating precarcinogens, and as determinants of cancer chemotherapy, where they participate in activation or inactivation of anti-cancer drugs. CYP2W1 is exclusively expressed in transformed tissue in the adult human, mainly in colon tumors. It is a potential drug target in cancer therapy. CYP2W1 has a molecular weight of 52-54 kDa, and 30/45 kDa of potential isoforms.

Storage

Storage:

Store at -80°C.

The product is shipped with ice packs. Upon receipt, store it immediately at -80°C

Storage Buffer:

PBS Only

For technical support and original validation data for this product please contact:

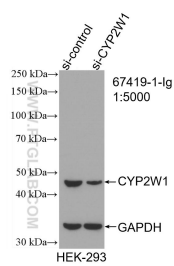
T: 4006900926

E: Proteintech-CN@ptglab.com

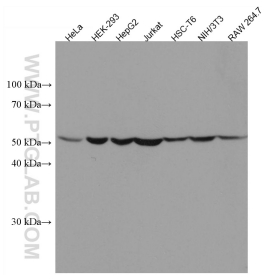
W: ptgcn.com

This product is exclusively available under Proteintech Group brand and is not available to purchase from any other manufacturer.

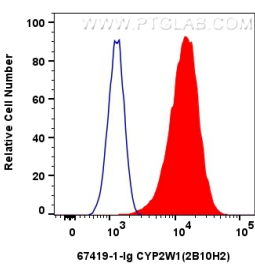
Selected Validation Data



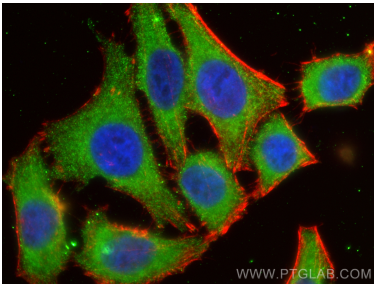
WB result of CYP2W1 antibody (67419-1-Ig; 1:5000; incubated at room temperature for 1.5 hours) with sh-Control and sh-CYP2W1 transfected HEK-293 cells. This data was developed using the same antibody clone with 67419-1-PBS in a different storage buffer formulation.



Various lysates were subjected to SDS PAGE followed by western blot with 67419-1-Ig (CYP2W1 antibody) at dilution of 1:10000 incubated at room temperature for 1.5 hours. This data was developed using the same antibody clone with 67419-1-PBS in a different storage buffer formulation.



1x10⁶ HUVEC cells were intracellularly stained with 0.4 ug CYP2W1 Monoclonal antibody (67419-1-Ig, Clone:2B10H2) and CoraLite®488-Conjugated AffiniPure Goat Anti-Mouse IgG(H+L) (SA00013-1)(red), or 0.4 ug Mouse IgG1 Isotype Control (MOPC-21) (65124-1-Ig, Clone: MOPC-21) (blue). Cells were fixed with 4% PFA and permeabilized with Flow Cytometry Perm Buffer (PF00011-C). This data was developed using the same antibody clone with 67419-1-PBS in a



Immunofluorescent analysis of (-20°C Ethanol) fixed HepG2 cells using CYP2W1 antibody (67419-1-Ig, Clone: 2B10H2) at dilution of 1:400 and Multi-rAb CoraLite® Plus 488-Goat Anti-Mouse Recombinant Secondary Antibody (H+L) (RGAM002), CL594-Phalloidin (red). This data was developed using the same antibody clone with 67419-1-PBS in a different storage buffer formulation.