

For Research Use Only

# CYP2W1 Monoclonal antibody

Catalog Number: 67419-1-Ig **Featured Product**



## Basic Information

<b>Catalog Number:</b> 67419-1-Ig	<b>GenBank Accession Number:</b> BC025761	<b>Purification Method:</b> Protein G purification
<b>Size:</b> 2000 ug/ml	<b>GeneID (NCBI):</b> 54905	<b>CloneNo.:</b> 2B10H2
<b>Source:</b> Mouse	<b>UNIPROT ID:</b> Q8TAV3	<b>Recommended Dilutions:</b> WB 1:5000-1:30000 IHC 1:1000-1:4000 IF/ICC 1:200-1:800
<b>Isotype:</b> IgG1	<b>Full Name:</b> cytochrome P450, family 2, subfamily W, polypeptide 1	
<b>Immunogen Catalog Number:</b> AG29982	<b>Calculated MW:</b> 54 kDa <b>Observed MW:</b> 45-54 kDa	

## Applications

<b>Tested Applications:</b> WB, IHC, IF/ICC, FC (Intra), ELISA	<b>Positive Controls:</b> <b>WB :</b> HeLa cells, HEK-293 cells, HepG2 cells, Jurkat cells, HSC-T6 cells, NIH/3T3 cells, RAW 264.7 cells <b>IHC :</b> human colon cancer tissue, <b>IF/ICC :</b> HepG2 cells,
<b>Species Specificity:</b> human, mouse, rat	
<b>Note-IHC: suggested antigen retrieval with <i>TE buffer pH 9.0</i>; (*) Alternatively, antigen retrieval may be performed with <i>citrate buffer pH 6.0</i></b>	

## Background Information

Cytochrome P450s have been proposed to be of importance both in carcinogenesis, by activating precarcinogens, and as determinants of cancer chemotherapy, where they participate in activation or inactivation of anti-cancer drugs. CYP2W1 is exclusively expressed in transformed tissue in the adult human, mainly in colon tumors. It is a potential drug target in cancer therapy. CYP2W1 has a molecular weight of 52-54 kDa, and 30/45 kDa of potential isoforms.

## Storage

**Storage:**  
Store at -20°C. Stable for one year after shipment.  
**Storage Buffer:**  
PBS with 0.02% sodium azide and 50% glycerol pH 7.3.  
**Aliquoting is unnecessary for -20°C storage**

For technical support and original validation data for this product please contact:

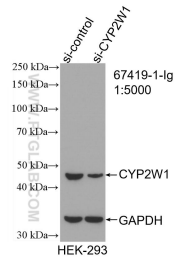
T: 4006900926

E: [Proteintech-CN@ptglab.com](mailto:Proteintech-CN@ptglab.com)

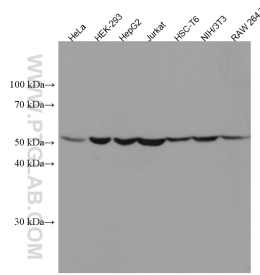
W: [ptgcn.com](http://ptgcn.com)

**This product is exclusively available under Proteintech Group brand and is not available to purchase from any other manufacturer.**

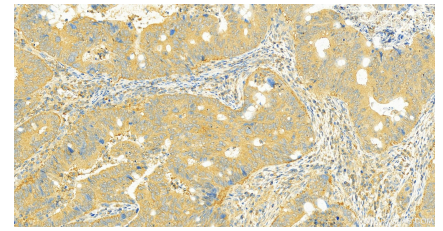
## Selected Validation Data



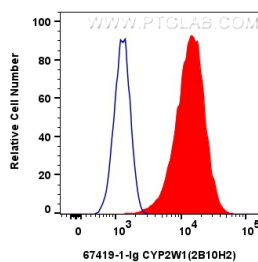
WB result of CYP2W1 antibody (67419-1-Ig; 1:5000; incubated at room temperature for 1.5 hours) with sh-Control and sh-CYP2W1 transfected HEK-293 cells.



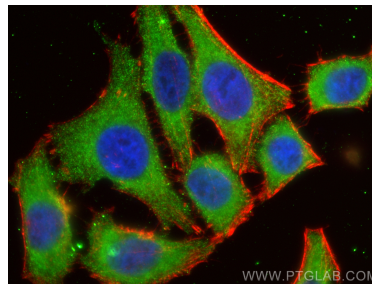
Various lysates were subjected to SDS PAGE followed by western blot with 67419-1-Ig (CYP2W1 antibody) at dilution of 1:10000 incubated at room temperature for 1.5 hours.



Immunohistochemical analysis of paraffin-embedded colon cancer slide using 67419-1-Ig (CYP2W1 antibody) at dilution of 1:2000 (under 20x lens). Heat mediated antigen retrieval with Tris-EDTA buffer (pH 9.0).



1x10<sup>6</sup> HUVEC cells were intracellularly stained with 0.4 ug CYP2W1 Monoclonal antibody (67419-1-Ig, Clone:2B10H2) and Coralite® 488-Conjugated AffiniPure Goat Anti-Mouse IgG(H+L) (SA00013-1) (red), or 0.4 ug Mouse IgG1 Isotype Control (MOPC-21) (65124-1-Ig, Clone: MOPC-21) (blue). Cells were fixed with 4% PFA and permeabilized with Flow Cytometry Perm Buffer (PF00011-C).



Immunofluorescent analysis of (-20°C Ethanol) fixed HepG2 cells using CYP2W1 antibody (67419-1-Ig, Clone: 2B10H2 ) at dilution of 1:400 and Multi-rAb Coralite® Plus 488-Goat Anti-Mouse Recombinant Secondary Antibody (H+L) (RGAM002), CL594-Phalloidin (red).