

For Research Use Only

# CAP2 Monoclonal antibody

Catalog Number: 67412-1-Ig



## Basic Information

Catalog Number:

67412-1-Ig

Concentration:

2000 ug/ml

Source:

Mouse

Isotype:

IgG2a

Immunogen Catalog Number:

AG8622

GenBank Accession Number:

BC008481

GeneID (NCBI):

10486

UNIPROT ID:

P40123

Full Name:

CAP, adenylate cyclase-associated protein, 2 (yeast)

Calculated MW:

477 aa, 53 kDa

Observed MW:

51-53 kDa

Purification Method:

Protein A purification

CloneNo.:

1G7D2

Recommended Dilutions:

WB: 1:2000-1:10000

## Applications

Tested Applications:

WB, ELISA

Species Specificity:

human

Positive Controls:

WB : A549 cells, HeLa cells, HepG2 cells, PC-3 cells, COLO 320 cells

## Background Information

CAPs (CAP1 and CAP2) are evolutionarily conserved proteins with roles in regulating the actin cytoskeleton and in signal transduction. CAP2 is predominantly expressed in brain, heart and skeletal muscle, and skin. It is found in the nucleus in undifferentiated myoblasts and at the M-line of differentiated myotubes. Overexpression of CAP2 has been reported in many cancers, including hepatocellular carcinoma (HCC), human breast cancer, and malignant melanoma.

## Storage

Storage:

Store at -20°C. Stable for one year after shipment.

Storage Buffer:

PBS with 0.02% sodium azide and 50% glycerol, pH7.3

Aliquoting is unnecessary for -20°C storage

For technical support and original validation data for this product please contact:

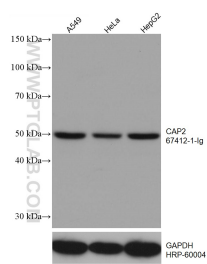
T: 4006900926

E: [Proteintech-CN@ptglab.com](mailto:Proteintech-CN@ptglab.com)

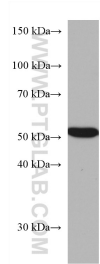
W: [ptgcn.com](http://ptgcn.com)

This product is exclusively available under Proteintech Group brand and is not available to purchase from any other manufacturer.

## Selected Validation Data



Various lysates were subjected to SDS PAGE followed by western blot with 67412-1-Ig (CAP2 antibody) at dilution of 1:5000 incubated at room temperature for 1.5 hours. The membrane was stripped and reblotted with HRP-conjugated GAPDH Monoclonal antibody (HRP-60004) as loading control.



HepG2 cells were subjected to SDS PAGE followed by western blot with 67412-1-Ig (CAP2 antibody) at dilution of 1:3000 incubated at room temperature for 1.5 hours.