

For Research Use Only

# MEK1/2 Monoclonal antibody

Catalog Number: 67410-1-Ig **8 Publications**



## Basic Information

<b>Catalog Number:</b> 67410-1-Ig	<b>GenBank Accession Number:</b> BC018645	<b>Purification Method:</b> Protein G purification
<b>Size:</b> 1000 ug/ml	<b>GeneID (NCBI):</b> 5605	<b>CloneNo.:</b> 1H8C2
<b>Source:</b> Mouse	<b>UNIPROT ID:</b> P36507	<b>Recommended Dilutions:</b> WB 1:5000-1:50000 IHC 1:1000-1:4000 IF/ICC 1:200-1:800
<b>Isotype:</b> IgG1	<b>Full Name:</b> mitogen-activated protein kinase kinase 2	
<b>Immunogen Catalog Number:</b> AG29871	<b>Calculated MW:</b> 44 kDa	
	<b>Observed MW:</b> 44-47 kDa	

## Applications

<b>Tested Applications:</b> WB, IHC, IF/ICC, ELISA	<b>Positive Controls:</b>
<b>Cited Applications:</b> WB, IHC	<b>WB :</b> HeLa cells, HEK-293 cells, HepG2 cells, Jurkat cells, K-562 cells, HSC-T6 cells, PC-12 cells, NIH/3T3 cells, 4T1 cells, Neuro-2a cells, MOLT-4 cells
<b>Species Specificity:</b> human, mouse, rat	<b>IHC :</b> human liver cancer tissue,
<b>Cited Species:</b> human, mouse, rat	<b>IF/ICC :</b> HeLa cells,
<b>Note-IHC: suggested antigen retrieval with TE buffer pH 9.0; (*) Alternatively, antigen retrieval may be performed with citrate buffer pH 6.0</b>	

## Background Information

MEK2(MAPK/ERK kinase 2) is also named as MAP2K2, MKK2, PRKMK2 and belongs to the MAP kinase kinase subfamily. MAPKK is itself dependent on Ser/Thr phosphorylation for activity catalyzed by MAP kinase kinase kinases (RAF or MEKK1). MEK1 and MEK2 are closely related, dual-specificity tyrosine/threonine protein kinases found in the Ras/Raf/MEK/ERK mitogen-activated protein kinase (MAPK) signaling pathway. 67410-1-Ig can recognize both the MEK2 and MEK1.

## Notable Publications

Author	Pubmed ID	Journal	Application
Qi Chen	35796909	Mol Cell Biochem	WB
Zehua Zuo	35899070	PNAS Nexus	WB
Qing Wang	32843616	Signal Transduct Target Ther	WB

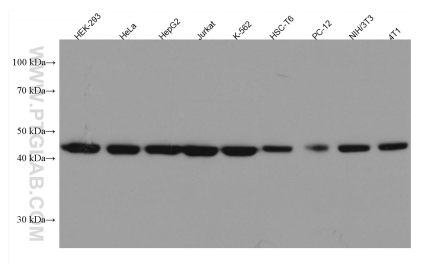
## Storage

**Storage:**  
Store at -20°C. Stable for one year after shipment.  
**Storage Buffer:**  
PBS with 0.02% sodium azide and 50% glycerol pH 7.3.  
**Aliquoting is unnecessary for -20°C storage**

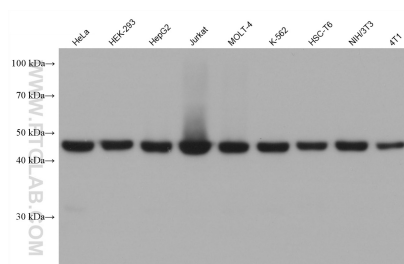
For technical support and original validation data for this product please contact:  
T: 4006900926 E: Proteintech-CN@ptglab.com W: ptgcn.com

**This product is exclusively available under Proteintech Group brand and is not available to purchase from any other manufacturer.**

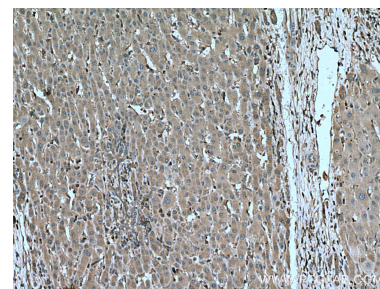
## Selected Validation Data



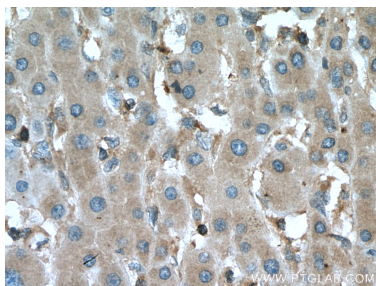
Various lysates were subjected to SDS PAGE followed by western blot with 67410-1-Ig (MEK1/2 antibody) at dilution of 1:20000 incubated at room temperature for 1.5 hours.



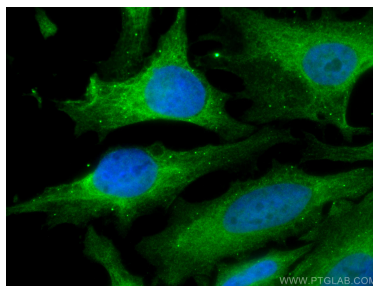
Various lysates were subjected to SDS PAGE followed by western blot with 67410-1-Ig (MEK1/2 antibody) at dilution of 1:10000 incubated at room temperature for 1.5 hours.



Immunohistochemical analysis of paraffin-embedded human liver cancer tissue slide using 67410-1-Ig (MEK1/2 antibody) at dilution of 1:2000 (under 10x lens). Heat mediated antigen retrieval with Tris-EDTA buffer (pH 9.0).



Immunohistochemical analysis of paraffin-embedded human liver cancer tissue slide using 67410-1-Ig (MEK1/2 antibody) at dilution of 1:2000 (under 40x lens). Heat mediated antigen retrieval with Tris-EDTA buffer (pH 9.0).



Immunofluorescent analysis of (4% PFA) fixed HeLa cells using MEK1/2 antibody (67410-1-Ig, Clone: 1H8C2 ) at dilution of 1:400 and CoraLite® 488-Conjugated AffiniPure Goat Anti-Mouse IgG(H+L).