

For Research Use Only

MAT1A Monoclonal antibody, PBS Only



Catalog Number: 67408-1-PBS

Basic Information

Catalog Number:	67408-1-PBS	GenBank Accession Number:	BC018359	Purification Method:	Protein A purification
Size:	1 mg/ml	GeneID (NCBI):	4143	CloneNo.:	2F1C1
Source:	Mouse	UNIPROT ID:	Q00266		
Isotype:	IgG2a	Full Name:	methionine adenosyltransferase I, alpha		
Immunogen Catalog Number:	AG3076	Calculated MW:	395 aa, 44 kDa		
		Observed MW:	49 kDa		

Applications

Tested Applications:
WB, IF, ELISA

Species Specificity:
Human, mouse, rat

Background Information

Methionine adenosyltransferase (MAT) is the enzyme that catalyzes the synthesis of S-adenosylmethionine (AdoMet), the main donor of methyl groups in the cell. In mammals MAT is encoded by two different genes, MAT1A and MAT2A. MAT1A is expressed only in the mature liver whereas fetal hepatocytes, extrahepatic tissues and liver cancer cells express MAT2A.

Storage

Storage:
Store at -80°C.

The product is shipped with ice packs. Upon receipt, store it immediately at -80°C

Storage Buffer:
PBS only

For technical support and original validation data for this product please contact:

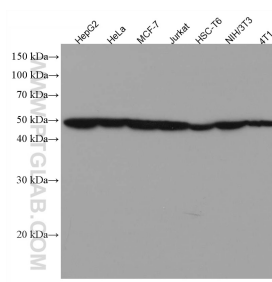
T: 4006900926

E: Proteintech-CN@ptglab.com

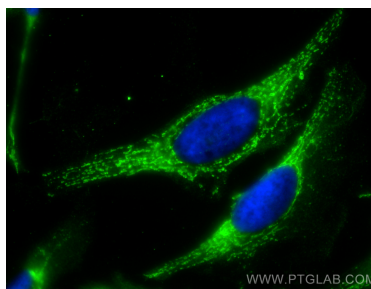
W: ptgcn.com

This product is exclusively available under Proteintech Group brand and is not available to purchase from any other manufacturer.

Selected Validation Data



Various lysates were subjected to SDS PAGE followed by western blot with 67408-1-Ig (MAT1A antibody) at dilution of 1:3000 incubated at room temperature for 1.5 hours. This data was developed using the same antibody clone with 67408-1-PBS in a different storage buffer formulation.



Immunofluorescent analysis of (-20°C Methanol) fixed HeLa cells using MAT1A antibody (67408-1-Ig, Clone: 2F1C1) at dilution of 1:800 and CoraLite®488-Conjugated AffiniPure Goat Anti-Mouse IgG(H+L). This data was developed using the same antibody clone with 67408-1-PBS in a different storage buffer formulation.