

For Research Use Only

# VEGFR2/KDR Monoclonal antibody

Catalog Number: 67407-1-Ig **6 Publications**



## Basic Information

<b>Catalog Number:</b> 67407-1-Ig	<b>GenBank Accession Number:</b> BC131822	<b>Purification Method:</b> Protein G purification
<b>Size:</b> 2100 µg/ml	<b>GeneID (NCBI):</b> 3791	<b>CloneNo.:</b> 1G2A8
<b>Source:</b> Mouse	<b>UNIPROT ID:</b> P35968	<b>Recommended Dilutions:</b> WB 1:1000-1:8000
<b>Isotype:</b> IgG1	<b>Full Name:</b> kinase insert domain receptor (a type III receptor tyrosine kinase)	
<b>Immunogen Catalog Number:</b> AG24589	<b>Calculated MW:</b> 1356 aa, 152 kDa	
	<b>Observed MW:</b> 230 kDa	

## Applications

<b>Tested Applications:</b> FC, WB, ELISA	<b>Positive Controls:</b> WB : human placenta tissue,
<b>Cited Applications:</b> IF, IHC, WB	
<b>Species Specificity:</b> Human	
<b>Cited Species:</b> human	

## Background Information

KDR, also named as VEGFR-2, FLK1 and CD309, is a receptor for VEGF or VEGFC. KDR which belongs to the protein kinase superfamily, has a tyrosine-protein kinase activity. The VEGF-kinase ligand/receptor signaling system plays a key role in vascular development and regulation of vascular permeability. In case of HIV-1 infection, the interaction with extracellular viral Tat protein seems to enhance angiogenesis in Kaposi's sarcoma lesions. KDR functions as the main mediator of VEGF-induced endothelial proliferation, survival, migration, tubular morphogenesis and sprouting. Mutations of this gene are implicated in infantile capillary hemangiomas.

## Notable Publications

Author	Pubmed ID	Journal	Application
Xiaofeng Dai	31636652	Front Genet	WB
Hongwei Jin	34150622	Front Oncol	WB
Hou-Fu Xia	35916917	Cell Tissue Res	IHC,IF

## Storage

**Storage:**  
Store at -20°C. Stable for one year after shipment.  
**Storage Buffer:**  
PBS with 0.02% sodium azide and 50% glycerol pH 7.3.  
Aliquoting is unnecessary for -20°C storage

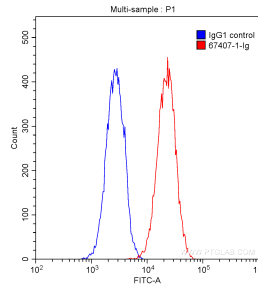
For technical support and original validation data for this product please contact:  
T: 4006900926 E: Proteintech-CN@ptglab.com W: ptgcn.com

**This product is exclusively available under Proteintech Group brand and is not available to purchase from any other manufacturer.**

## Selected Validation Data



human placenta tissue were subjected to SDS PAGE followed by western blot with 67407-1-ig (VEGFR2 antibody) at dilution of 1:4000 incubated at room temperature for 1.5 hours.



$1 \times 10^6$  HUVEC cells were intracellularly stained with 0.20 ug/test Anti-Human VEGFR2 (67407-1-ig, Clone:1G2A8) (red) or 0.20 ug Mouse IgG1 Isotype Control(66360-1-ig, CloneT1F8D3F10) (blue) and CoraLite®488-Conjugated AffiniPure Goat Anti-Mouse IgG(H+L) with dilution 1:1000. Fixed with 90% MeOH.