

For Research Use Only

# Chicken Chicken IgY Monoclonal antibody, PBS Only



Catalog Number: 67405-1-PBS

## Basic Information

Catalog Number:

67405-1-PBS

Size:

1 mg/ml

Source:

Mouse

Isotype:

IgG2a

GenBank Accession Number:

GeneID (NCBI):

Full Name:

Observed MW:

180 kDa, 70 kDa

Purification Method:

Protein A purification

CloneNo.:

1E12G2

## Applications

Tested Applications:

WB, Indirect ELISA

Species Specificity:

Chicken

## Background Information

IgY (immunoglobulin Y) is a type of immunoglobulin found in birds and reptiles. High concentration of IgY exists in chicken egg yolk. In chickens, IgY is functional same to IgG. IgY antibodies do not cross-react with Fc receptors, mammalian immunoglobulins such as rheumatoid factors and HAMA or activate the complement system thus could reduce false positive results in immunological assays. This antibody was generated from chicken IgY that extracted from chicken eggs. This product recognizes the heavy chain of chicken IgY and can detect the contact form of chicken IgY (~180 kDa) and reduced form (~70 kDa).

## Storage

Storage:

Store at -80°C.

The product is shipped with ice packs. Upon receipt, store it immediately at -80°C

Storage Buffer:

PBS Only

For technical support and original validation data for this product please contact:

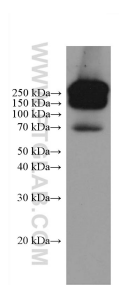
T: 4006900926

E: [Proteintech-CN@ptglab.com](mailto:Proteintech-CN@ptglab.com)

W: [ptgcn.com](http://ptgcn.com)

This product is exclusively available under Proteintech Group brand and is not available to purchase from any other manufacturer.

## Selected Validation Data



100 nL chicken egg were subjected to SDS-PAGE at non-reducing condition followed by western blot with 67405-1-Ig (chicken IgY antibody) at dilution of 1:10000 incubated at room temperature for 1.5 hours. . This data was developed using the same antibody clone with 67405-1-PBS in a different storage buffer formulation.