

For Research Use Only

# Chicken IgY Monoclonal antibody

Catalog Number: 67405-1-Ig **1 Publications**



## Basic Information

Catalog Number:

67405-1-Ig

Size:

2609  $\mu$ g/ml

Source:

Mouse

Isotype:

IgG2a

GenBank Accession Number:

GeneID (NCBI):

Full Name:

Observed MW:

180 kDa, 70 kDa

Purification Method:

Protein A purification

CloneNo.:

1E12G2

Recommended Dilutions:

WB 1:5000-1:50000

## Applications

Tested Applications:

WB, ELISA

Species Specificity:

Chicken

Positive Controls:

WB : Chicken IgY, Chicken egg

## Background Information

IgY (immunoglobulin Y) is a type of immunoglobulin found in birds and reptiles. High concentration of IgY exists in chicken egg yolk. In chickens, IgY is functional same to IgG. IgY antibodies do not cross-react with Fc receptors, mammalian immunoglobulins such as rheumatoid factors and HAMA or activate the complement system thus could reduce false positive results in immunological assays. This antibody was generated from chicken IgY that extracted from chicken eggs. This product recognizes the heavy chain of chicken IgY and can detect the contact form of chicken IgY (~180 kDa) and reduced form (~70 kDa).

## Notable Publications

Author	Pubmed ID	Journal	Application
Hao Li	35550770	Carbohydr Polym	

## Storage

Storage:

Store at -20°C.

Storage Buffer:

PBS with 0.02% sodium azide and 50% glycerol pH 7.3.

Aliquoting is unnecessary for -20°C storage

For technical support and original validation data for this product please contact:

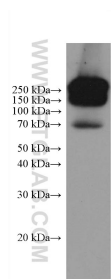
T: 4006900926

E: [Proteintech-CN@ptglab.com](mailto:Proteintech-CN@ptglab.com)

W: [ptgcn.com](http://ptgcn.com)

This product is exclusively available under Proteintech Group brand and is not available to purchase from any other manufacturer.

## Selected Validation Data



100 nL chicken egg were subjected to SDS-PAGE at non-reducing condition followed by western blot with 67405-1-Ig (chicken IgY antibody) at dilution of 1:10000 incubated at room temperature for 1.5 hours. .