

For Research Use Only

CCT5 Monoclonal antibody

Catalog Number: 67400-1-Ig

Featured Product

2 Publications



Basic Information

Catalog Number:

67400-1-Ig

Size:

1900 ug/ml

Source:

Mouse

Isotype:

IgG1

Immunogen Catalog Number:

AG21421

GenBank Accession Number:

BC035499

GeneID (NCBI):

22948

UNIPROT ID:

P48643

Full Name:

chaperonin containing TCP1, subunit 5 (epsilon)

Calculated MW:

541 aa, 60 kDa

Observed MW:

60 kDa

Purification Method:

Protein G purification

CloneNo.:

1B12E10

Recommended Dilutions:

WB 1:2000-1:10000

IHC 1:500-1:2000

IF/ICC 1:400-1:1600

Applications

Tested Applications:

WB, IHC, IF/ICC, ELISA

Cited Applications:

WB

Species Specificity:

human, mouse, rat

Cited Species:

human

Note-IHC: suggested antigen retrieval with TE buffer pH 9.0; (*) Alternatively, antigen retrieval may be performed with citrate buffer pH 6.0

Positive Controls:

WB : HeLa cells, HEK-293 cells, HepG2 cells, Jurkat cells, HSC-T6 cells, NIH/3T3 cells, 4T1 cells

IHC : human skin cancer tissue,

IF/ICC : U2OS cells, HepG2 cells

Background Information

CCT5 is a subunit of chaperonin containing TCP1 complex that is also known as the TCP1 ring complex (TRiC). CCT5 involves enhancing Wnt/ β -catenin signalling activity in GCs through abrogating the interaction between E-cadherin and β -catenin (PMID: 35194191). The expression levels of CCT5 have been found to be upregulated in types of cancers, including breast cancer, colon cancer, lung cancer, glioblastoma, hepatocellular carcinoma and ovarian cancer (PMID: 36768350). Human CCT5 consist of 541 amino acids organized in β -sheets and α -helixes distributed into three domains and has a predicted molecular weight of 60 kDa.

Notable Publications

Author	Pubmed ID	Journal	Application
Ashley Segura-Roman	39211170	bioRxiv	WB
Yuichi Yagita	37480851	Cell	WB

Storage

Storage:

Store at -20°C. Stable for one year after shipment.

Storage Buffer:

PBS with 0.02% sodium azide and 50% glycerol pH 7.3.

Aliquoting is unnecessary for -20°C storage

For technical support and original validation data for this product please contact:

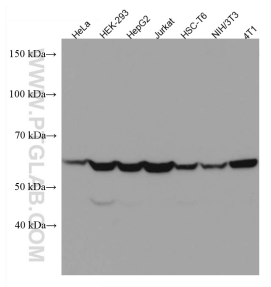
T: 4006900926

E: Proteintech-CN@ptglab.com

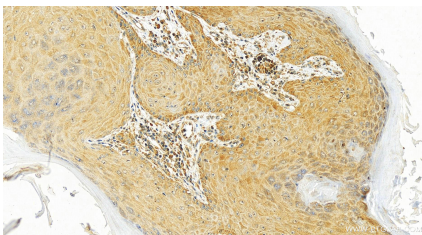
W: ptgcn.com

This product is exclusively available under Proteintech Group brand and is not available to purchase from any other manufacturer.

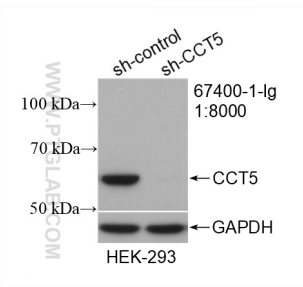
Selected Validation Data



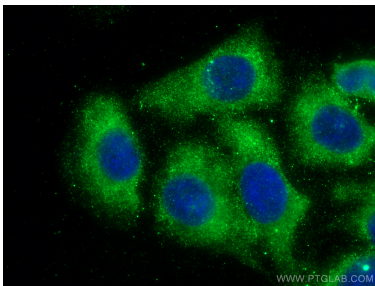
Various lysates were subjected to SDS PAGE followed by western blot with 67400-1-Ig (CCT5 antibody) at dilution of 1:5000 incubated at room temperature for 1.5 hours.



Immunohistochemical analysis of paraffin-embedded skin cancer slide using 67400-1-Ig (CCT5 antibody) at dilution of 1:1000 (under 20x lens). Heat mediated antigen retrieval with Tris-EDTA buffer (pH 9.0).



WB result of CCT5 antibody (67400-1-Ig; 1:8000; incubated at room temperature for 1.5 hours) with sh-Control and sh-CCT5 transfected HEK-293 cells.



Immunofluorescent analysis of (-20°C Methanol) fixed U2OS cells using CCT5 antibody (67400-1-Ig, Clone: 1B12E10) at dilution of 1:800 and CoraLite®488-Conjugated AffiniPure Goat Anti-Mouse IgG(H+L).