

For Research Use Only

LACTB2 Monoclonal antibody, PBS Only (Capture)

Catalog Number: 67399-1-PBS

Featured Product



Basic Information

Catalog Number:

67399-1-PBS

Size:

1mg/ml

Source:

Mouse

Isotype:

IgG1

Immunogen Catalog Number:

AG10231

GenBank Accession Number:

BC000878

GeneID (NCBI):

51110

UNIPROT ID:

Q53H82

Full Name:

lactamase, beta 2

Calculated MW:

288 aa, 33 kDa

Observed MW:

33 kDa

Purification Method:

Protein G purification

CloneNo.:

1G6B1

Applications

Tested Applications:

WB, IHC, IF/ICC, IF-P, Cytometric bead array, Indirect ELISA

Species Specificity:

human, mouse

Background Information

Storage

Storage:

Store at -80°C.

The product is shipped with ice packs. Upon receipt, store it immediately at -80°C

Storage Buffer:

PBS Only

For technical support and original validation data for this product please contact:

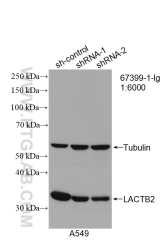
T: 4006900926

E: Proteintech-CN@ptglab.com

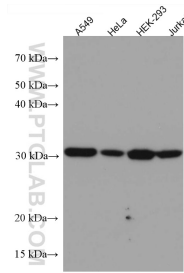
W: ptgcn.com

This product is exclusively available under Proteintech Group brand and is not available to purchase from any other manufacturer.

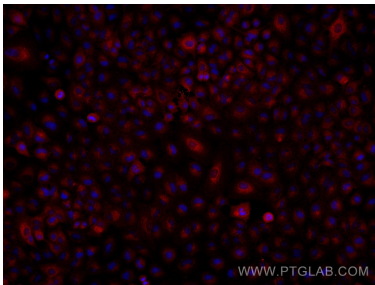
Selected Validation Data



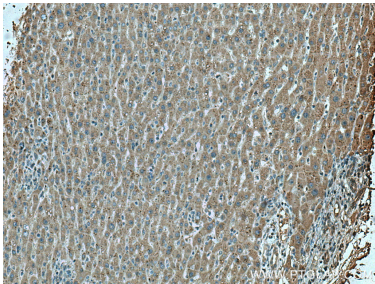
WB result of LACTB2 antibody (67399-1-Ig; 1:6000; incubated at room temperature for 1.5 hours) with sh-Control and sh-LACTB2 transfected A549 cells. This data was developed using the same antibody clone with 67399-1-PBS in a different storage buffer formulation.



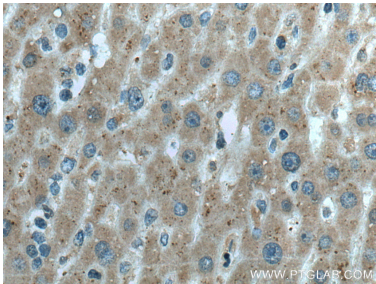
Various lysates were subjected to SDS PAGE followed by western blot with 67399-1-Ig (LACTB2 antibody) at dilution of 1:3000 incubated at room temperature for 1.5 hours. This data was developed using the same antibody clone with 67399-1-PBS in a different storage buffer formulation.



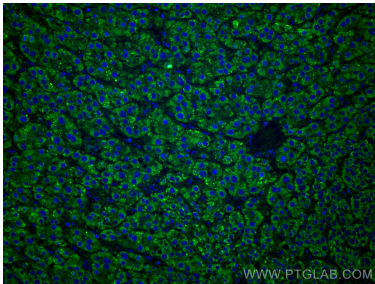
Immunofluorescent analysis of (4% PFA) fixed A549 cells using LACTB2 antibody (67399-1-Ig, Clone: 1G6B1) at dilution of 1:2000 and Multi-Ab Coralite® Plus 594-Goat Anti-Mouse Recombinant Secondary Antibody (H+L) (Cat.NO. RGAM004). This data was developed using the same antibody clone with 67399-1-PBS in a different storage buffer formulation.



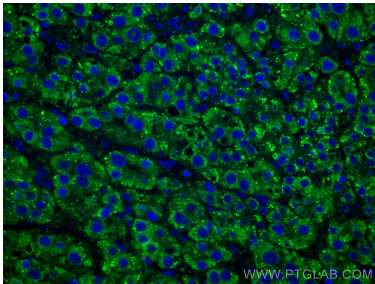
Immunohistochemical analysis of paraffin-embedded human liver cancer tissue slide using 67399-1-Ig (LACTB2 antibody) at dilution of 1:600 (under 10x lens). Heat mediated antigen retrieval with Tris-EDTA buffer (pH 9.0). This data was developed using the same antibody clone with 67399-1-PBS in a different storage buffer formulation.



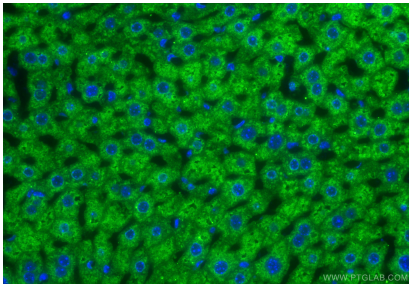
Immunohistochemical analysis of paraffin-embedded human liver cancer tissue slide using 67399-1-Ig (LACTB2 antibody) at dilution of 1:600 (under 40x lens). Heat mediated antigen retrieval with Tris-EDTA buffer (pH 9.0). This data was developed using the same antibody clone with 67399-1-PBS in a different storage buffer formulation.



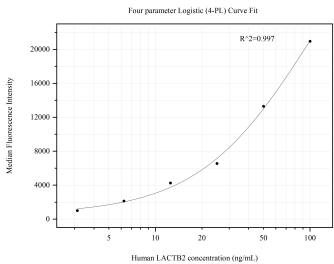
Immunofluorescent analysis of (4% PFA) fixed human liver cancer tissue using LACTB2 antibody (67399-1-Ig, Clone: 1G6B1) at dilution of 1:400 and Coralite®488-Conjugated AffiniPure Goat Anti-Mouse IgG(H+L). This data was developed using the same antibody clone with 67399-1-PBS in a different storage buffer formulation.



Immunofluorescent analysis of (4% PFA) fixed human liver cancer tissue using LACTB2 antibody (67399-1-Ig, Clone: 1G6B1) at dilution of 1:400 and Coralite®488-Conjugated AffiniPure Goat Anti-Mouse IgG(H+L). This data was developed using the same antibody clone with 67399-1-PBS in a different storage buffer formulation.



Immunofluorescent analysis of (4% PFA) fixed paraffin-embedded mouse liver tissue using LACTB2 antibody (67399-1-Ig, Clone: 1G6B1) at dilution of 1:400 and Coralite®488-Conjugated Goat Anti-Mouse IgG(H+L) (SA00013-1). Heat mediated antigen retrieval with Tris-EDTA buffer (pH 9.0). This data was developed using the same antibody clone with 67399-1-PBS in a different storage buffer formulation.



Cytometric bead array standard curve of MP50726-4, LACTB2 Monoclonal Matched Antibody Pair, PBS Only. Capture antibody: 67399-1-PBS. Detection antibody: 67399-4-PBS. Standard:Ag10231. Range: 3.125-100 ng/mL