

For Research Use Only

LACTB2 Monoclonal antibody

Catalog Number: 67399-1-Ig **Featured Product**



Basic Information

Catalog Number:

67399-1-Ig

Size:

2000 ug/ml

Source:

Mouse

Isotype:

IgG1

Immunogen Catalog Number:

AG10231

GenBank Accession Number:

BC000878

GeneID (NCBI):

51110

UNIPROT ID:

Q53H82

Full Name:

lactamase, beta 2

Calculated MW:

288 aa, 33 kDa

Observed MW:

33 kDa

Purification Method:

Protein G purification

CloneNo.:

1G6B1

Recommended Dilutions:

WB 1:1000-1:6000

IHC 1:300-1:1200

IF-P 1:200-1:800

IF/ICC 1:1000-1:4000

Applications

Tested Applications:

WB, IHC, IF/ICC, IF-P, ELISA

Species Specificity:

human, mouse

Note-IHC: suggested antigen retrieval with *TE buffer pH 9.0*; (*) Alternatively, antigen retrieval may be performed with *citrate buffer pH 6.0*

Positive Controls:

WB : A549 cells, NIH/3T3 cells, HeLa cells, HEK-293 cells, Jurkat cells

IHC : human liver cancer tissue,

IF-P : human liver cancer tissue, mouse liver tissue

IF/ICC : A549 cells,

Background Information

Storage

Storage:

Store at -20°C. Stable for one year after shipment.

Storage Buffer:

PBS with 0.02% sodium azide and 50% glycerol pH 7.3.

Aliquoting is unnecessary for -20°C storage

For technical support and original validation data for this product please contact:

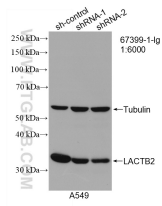
T: 4006900926

E: Proteintech-CN@ptglab.com

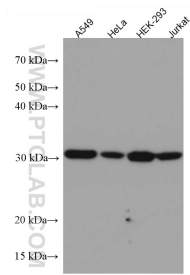
W: ptgcn.com

This product is exclusively available under Proteintech Group brand and is not available to purchase from any other manufacturer.

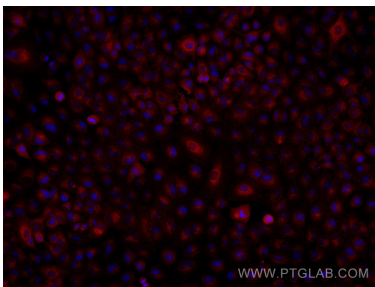
Selected Validation Data



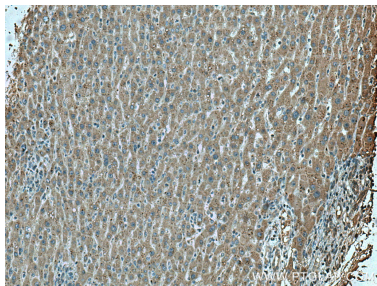
WB result of LACTB2 antibody (67399-1-Ig; 1:6000; incubated at room temperature for 1.5 hours) with sh-Control and sh-LACTB2 transfected A549 cells.



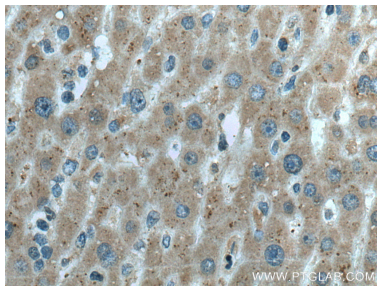
Various lysates were subjected to SDS PAGE followed by western blot with 67399-1-Ig (LACTB2 antibody) at dilution of 1:3000 incubated at room temperature for 1.5 hours.



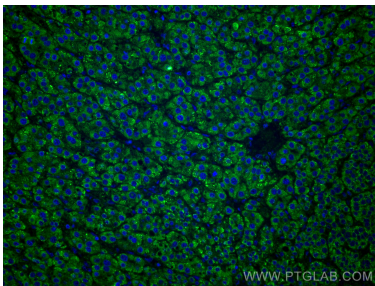
Immunofluorescent analysis of (4% PFA) fixed A549 cells using LACTB2 antibody (67399-1-Ig, Clone: 1G6B1) at dilution of 1:2000 and Multi-rAb Coralite® Plus 594-Goat Anti-Mouse Recombinant Secondary Antibody (H+L) (Cat.NO. RGAM004).



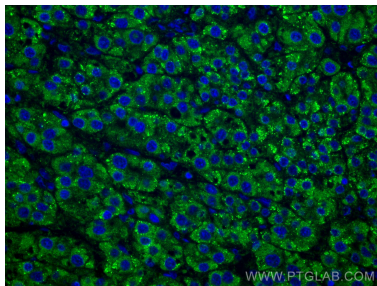
Immunohistochemical analysis of paraffin-embedded human liver cancer tissue slide using 67399-1-Ig (LACTB2 antibody) at dilution of 1:600 (under 10x lens). Heat mediated antigen retrieval with Tris-EDTA buffer (pH 9.0).



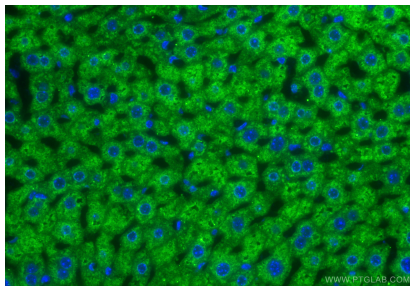
Immunohistochemical analysis of paraffin-embedded human liver cancer tissue slide using 67399-1-Ig (LACTB2 antibody) at dilution of 1:600 (under 40x lens). Heat mediated antigen retrieval with Tris-EDTA buffer (pH 9.0).



Immunofluorescent analysis of (4% PFA) fixed human liver cancer tissue using LACTB2 antibody (67399-1-Ig, Clone: 1G6B1) at dilution of 1:400 and Coralite® 488-Conjugated AffiniPure Goat Anti-Mouse IgG(H+L).



Immunofluorescent analysis of (4% PFA) fixed human liver cancer tissue using LACTB2 antibody (67399-1-Ig, Clone: 1G6B1) at dilution of 1:400 and Coralite® 488-Conjugated AffiniPure Goat Anti-Mouse IgG(H+L).



Immunofluorescent analysis of (4% PFA) fixed paraffin-embedded mouse liver tissue using LACTB2 antibody (67399-1-Ig, Clone: 1G6B1) at dilution of 1:400 and Coralite® 488-Conjugated Goat Anti-Mouse IgG(H+L) (SA00013-1). Heat mediated antigen retrieval with Tris-EDTA buffer (pH 9.0).