

For Research Use Only

Caspase 4 Monoclonal antibody, PBS Only

Catalog Number: 67398-1-PBS



Basic Information

Catalog Number: 67398-1-PBS	GenBank Accession Number: BC017839	Purification Method: Protein A purification
Concentration: 1mg/ml	GeneID (NCBI): 837	CloneNo.: 1D1E12
Source: Mouse	UNIPROT ID: P49662	
Isotype: IgG1	Full Name: caspase 4, apoptosis-related cysteine peptidase	
Immunogen Catalog Number: AG29488	Calculated MW: 377 aa, 43 kDa	
	Observed MW: 43-48 kDa	

Applications

Tested Applications:
WB, IHC, IF/ICC, Indirect ELISA

Species Specificity:
human

Background Information

Caspase 4 (CASP4), is a member of the cysteine-aspartic acid protease (caspase) family. Sequential activation of caspases plays a central role in the execution-phase of cell apoptosis. Caspase 4 is able to cleave and activate its own precursor protein, as well as caspase 1 precursor. Overexpression of caspase 4 will induce cell apoptosis.

Storage

Storage:
Store at -80°C.
The product is shipped with ice packs. Upon receipt, store it immediately at -80°C

Storage Buffer:
PBS Only

For technical support and original validation data for this product please contact:

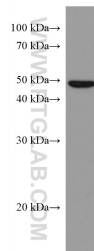
T: 4006900926

E: Proteintech-CN@ptglab.com

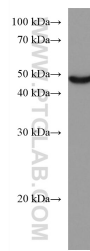
W: ptgcn.com

This product is exclusively available under Proteintech Group brand and is not available to purchase from any other manufacturer.

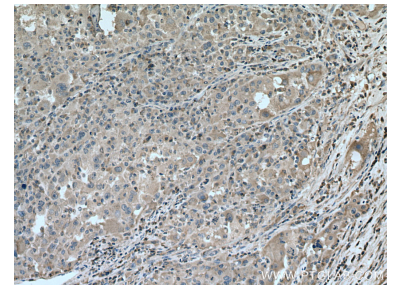
Selected Validation Data



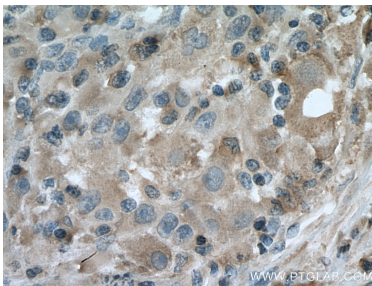
SGC-7901 cells were subjected to SDS PAGE followed by western blot with 67398-1-Ig (Caspase 4 antibody) at dilution of 1:5000 incubated at room temperature for 1.5 hours. This data was developed using the same antibody clone with 67398-1-PBS in a different storage buffer formulation.



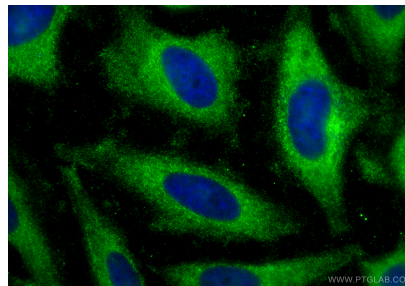
HL-60 cells were subjected to SDS PAGE followed by western blot with 67398-1-Ig (Caspase 4 antibody) at dilution of 1:5000 incubated at room temperature for 1.5 hours. This data was developed using the same antibody clone with 67398-1-PBS in a different storage buffer formulation.



Immunohistochemical analysis of paraffin-embedded human liver cancer tissue slide using 67398-1-Ig (Caspase 4 antibody) at dilution of 1:500 (under 10x lens). Heat mediated antigen retrieval with Tris-EDTA buffer (pH 9.0). This data was developed using the same antibody clone with 67398-1-PBS in a different storage buffer formulation.



Immunohistochemical analysis of paraffin-embedded human liver cancer tissue slide using 67398-1-Ig (Caspase 4 antibody) at dilution of 1:500 (under 40x lens). Heat mediated antigen retrieval with Tris-EDTA buffer (pH 9.0). This data was developed using the same antibody clone with 67398-1-PBS in a different storage buffer formulation.



Immunofluorescent analysis of (-20°C Ethanol) fixed HeLa cells using Caspase 4 antibody (67398-1-Ig, Clone: 1D1E12) at dilution of 1:800 and Coralite®488-Conjugated Goat Anti-Mouse IgG(H+L) (SA00013-1). This data was developed using the same antibody clone with 67398-1-PBS in a different storage buffer formulation.