

For Research Use Only

Caspase 4 Monoclonal antibody

Catalog Number: 67398-1-Ig **2 Publications**



Basic Information

Catalog Number: 67398-1-Ig	GenBank Accession Number: BC017839	Purification Method: Protein A purification
Size: 2300 µg/ml	GeneID (NCBI): 837	CloneNo.: 1D1E12
Source: Mouse	UNIPROT ID: P49662	Recommended Dilutions: WB 1:2000-1:10000 IHC 1:250-1:1000
Isotype: IgG1	Full Name: caspase 4, apoptosis-related cysteine peptidase	
Immunogen Catalog Number: AG29488	Calculated MW: 377 aa, 43 kDa	
	Observed MW: 43-48 kDa	

Applications

Tested Applications: IHC, WB, ELISA	Positive Controls:
Cited Applications: WB, IHC	WB : SGC-7901 cells, A549 cells, HeLa cells, HepG2 cells, HL-60 cells
Species Specificity: Human	IHC : human liver cancer tissue,
Cited Species: human	
Note-IHC: suggested antigen retrieval with TE buffer pH 9.0; (*) Alternatively, antigen retrieval may be performed with citrate buffer pH 6.0	

Background Information

Caspase 4 (CASP4), is a member of the cysteine-aspartic acid protease (caspase) family. Sequential activation of caspases plays a central role in the execution-phase of cell apoptosis. Caspase 4 is able to cleave and activate its own precursor protein, as well as caspase 1 precursor. Overexpression of caspase 4 will induce cell apoptosis.

Notable Publications

Author	Pubmed ID	Journal	Application
Guiying He	36129672	Hum Cell	IHC
Amy H Chan	37558421	Life Sci Alliance	WB

Storage

Storage:
Store at -20°C.
Storage Buffer:
PBS with 0.02% sodium azide and 50% glycerol pH 7.3.
Aliquoting is unnecessary for -20°C storage

For technical support and original validation data for this product please contact:

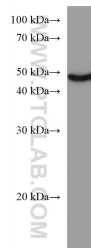
T: 4006900926

E: Proteintech-CN@ptglab.com

W: ptgcn.com

This product is exclusively available under Proteintech Group brand and is not available to purchase from any other manufacturer.

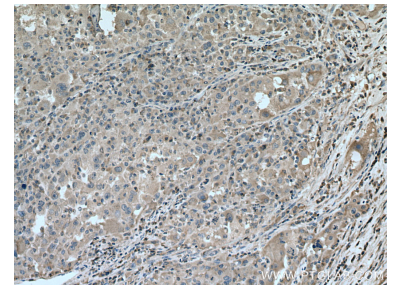
Selected Validation Data



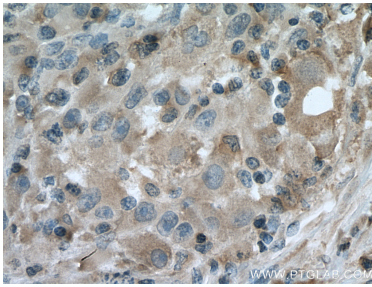
HL-60 cells were subjected to SDS PAGE followed by western blot with 67398-1-Ig (Caspase 4 antibody) at dilution of 1:5000 incubated at room temperature for 1.5 hours.



SGC-7901 cells were subjected to SDS PAGE followed by western blot with 67398-1-Ig (Caspase 4 antibody) at dilution of 1:5000 incubated at room temperature for 1.5 hours.



Immunohistochemical analysis of paraffin-embedded human liver cancer tissue slide using 67398-1-Ig (Caspase 4 antibody) at dilution of 1:500 (under 10x lens). Heat mediated antigen retrieval with Tris-EDTA buffer (pH 9.0).



Immunohistochemical analysis of paraffin-embedded human liver cancer tissue slide using 67398-1-Ig (Caspase 4 antibody) at dilution of 1:500 (under 40x lens). Heat mediated antigen retrieval with Tris-EDTA buffer (pH 9.0).