

For Research Use Only

# KEL Monoclonal antibody

Catalog Number: 67393-1-Ig



## Basic Information

Catalog Number:

67393-1-Ig

Size:

1300 µg/ml

Source:

Mouse

Isotype:

IgG2a

Immunogen Catalog Number:

AG28192

GenBank Accession Number:

BC050639

GeneID (NCBI):

3792

UNIPROT ID:

P23276

Full Name:

Kell blood group, metallo-endopeptidase

Calculated MW:

83 kDa

Observed MW:

93 kDa

Purification Method:

Protein A purification

CloneNo.:

1C8B6

Recommended Dilutions:

WB 1:3000-1:15000

## Applications

Tested Applications:

WB, ELISA

Species Specificity:

Human

Positive Controls:

WB : human red blood cells,

## Background Information

### Storage

Storage:

Store at -20°C.

Storage Buffer:

PBS with 0.02% sodium azide and 50% glycerol pH 7.3.

Aliquoting is unnecessary for -20°C storage

For technical support and original validation data for this product please contact:

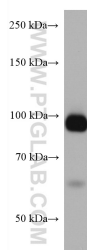
T: 4006900926

E: [Proteintech-CN@ptglab.com](mailto:Proteintech-CN@ptglab.com)

W: [ptgcn.com](http://ptgcn.com)

This product is exclusively available under Proteintech Group brand and is not available to purchase from any other manufacturer.

## Selected Validation Data



human red blood cells were subjected to SDS PAGE followed by western blot with 67393-1-Ig (KEL antibody) at dilution of 1:5000 incubated at room temperature for 1.5 hours.