

## PPP4R1 Monoclonal antibody

Catalog Number: 67392-1-Ig 1 Publications

## Basic Information

## Catalog Number:

67392-1-Ig

## Size:

1800 µg/ml

## Source:

Mouse

## Isotype:

IgG1

## Immunogen Catalog Number:

AG26750

## GenBank Accession Number:

BC060829

## GeneID (NCBI):

9989

## UNIPROT ID:

Q8TF05

## Full Name:

protein phosphatase 4, regulatory subunit 1

## Calculated MW:

107 kDa

## Observed MW:

120-130 kDa

## Purification Method:

Protein G purification

## CloneNo.:

3D12G12

## Recommended Dilutions:

WB 1:2000-1:6000

IHC 1:250-1:1000

IF-P 1:200-1:800

## Applications

## Tested Applications:

WB, IHC, IF-P, FC (Intra), ELISA

## Cited Applications:

WB, IHC, IF

## Species Specificity:

human, mouse, rat

## Cited Species:

human

**Note-IHC: suggested antigen retrieval with TE buffer pH 9.0; (\*) Alternatively, antigen retrieval may be performed with citrate buffer pH 6.0**

## Positive Controls:

WB : HeLa cells, HEK-293 cells, Jurkat cells, HSC-T6 cells

IHC : human liver cancer tissue,

IF-P : human liver cancer tissue, mouse liver tissue

## Background Information

## Notable Publications

Author	Pubmed ID	Journal	Application
Xiaowei Li	38482448	Transl Cancer Res	WB,IHC,IF

## Storage

## Storage:

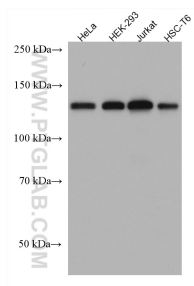
Store at -20°C. Stable for one year after shipment.

## Storage Buffer:

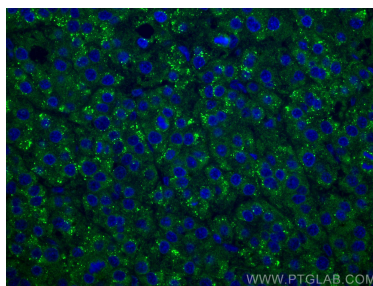
PBS with 0.02% sodium azide and 50% glycerol pH 7.3.

Aliquoting is unnecessary for -20°C storage

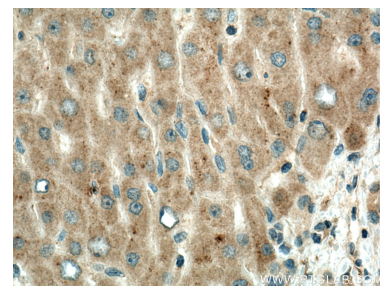
## Selected Validation Data



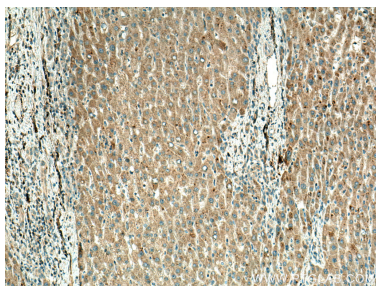
Various lysates were subjected to SDS PAGE followed by western blot with 67392-1-Ig (PPP4R1 antibody) at dilution of 1:3000 incubated at room temperature for 1.5 hours.



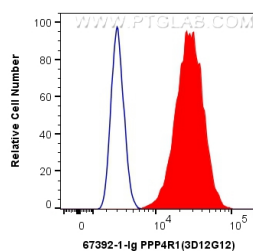
Immunofluorescent analysis of (4% PFA) fixed human liver cancer tissue using PPP4R1 antibody (67392-1-Ig, Clone: 3D12G12) at dilution of 1:400 and CoraLite®488-Conjugated AffiniPure Goat Anti-Mouse IgG(H+L).



Immunohistochemical analysis of paraffin-embedded human liver cancer tissue slide using 67392-1-Ig (PPP4R1 antibody) at dilution of 1:500 (under 40x lens). Heat mediated antigen retrieval with Tris-EDTA buffer (pH 9.0).



Immunohistochemical analysis of paraffin-embedded human liver cancer tissue slide using 67392-1-Ig (PPP4R1 antibody) at dilution of 1:500 (under 10x lens). Heat mediated antigen retrieval with Tris-EDTA buffer (pH 9.0).



1X10<sup>6</sup> HeLa cells were intracellularly stained with 0.4 ug Anti-Human PPP4R1 (67392-1-Ig, Clone:3D12G12) and CoraLite®488-Conjugated AffiniPure Goat Anti-Mouse IgG(H+L) at dilution 1:1000 (red), or 0.4 ug Control Antibody. Cells were fixed with 4% PFA and permeabilized with Flow Cytometry Perm Buffer (PF00011-C).