

FGL1 Monoclonal antibody

Catalog Number: 67391-1-Ig 1 Publications

Basic Information

Catalog Number: 67391-1-Ig	GenBank Accession Number: BC007047	Purification Method: Protein G purification
Size: 2569 μ g/ml	GeneID (NCBI): 2267	CloneNo.: 2B11C6
Source: Mouse	UNIPROT ID: Q08830	Recommended Dilutions: WB 1:1000-1:5400 IHC 1:500-1:2000 IF/ICC 1:200-1:800
Isotype: IgG1	Full Name: fibrinogen-like 1	
Immunogen Catalog Number: AG8581	Calculated MW: 312 aa, 36 kDa Observed MW: 36 kDa	

Applications

Tested Applications: WB, IF/ICC, IHC, ELISA	Positive Controls: WB : pig liver tissue, human placenta tissue IHC : human liver tissue, human lung tissue, human liver cancer tissue IF/ICC : HepG2 cells,
Cited Applications: WB	
Species Specificity: Human, pig	
Cited Species: mouse	
Note-IHC: suggested antigen retrieval with TE buffer pH 9.0; (*) Alternatively, antigen retrieval may be performed with citrate buffer pH 6.0	

Background Information

Fibrinogen-like 1 (FGL1), also termed hepatocyte-derived fibrinogen-related protein 1 (HFREP1) or hepassocin, is a predominantly liver expressed protein that has been implicated as both a hepatoprotectant and a hepatocyte mitogen. FGL1 expression is decreased in hepatocellular carcinoma (HCC), and it may play a role in the development of hepatocellular carcinomas.

Notable Publications

Author	Pubmed ID	Journal	Application
Dafei Chai	34977338	Mol Ther Oncolytics	WB

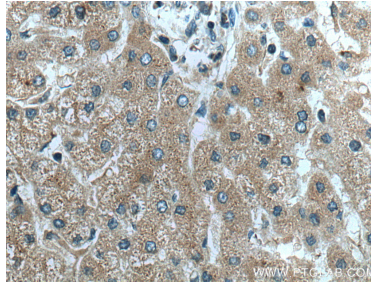
Storage

Storage:
Store at -20°C.
Storage Buffer:
PBS with 0.02% sodium azide and 50% glycerol pH 7.3.
Aliquoting is unnecessary for -20°C storage

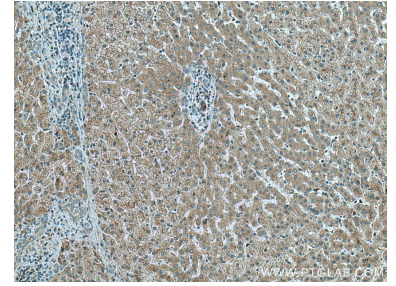
Selected Validation Data



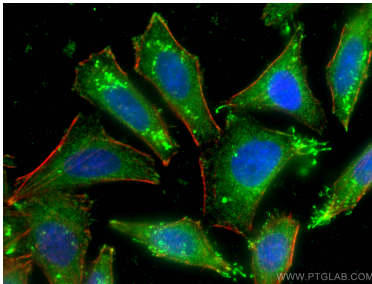
pig liver tissue were subjected to SDS PAGE followed by western blot with 67391-1-Ig (FGL1 antibody) at dilution of 1:2700 incubated at room temperature for 1.5 hours.



Immunohistochemical analysis of paraffin-embedded human liver tissue slide using 67391-1-Ig (FGL1 antibody) at dilution of 1:1000 (under 40x lens). Heat mediated antigen retrieval with Tris-EDTA buffer (pH 9.0).



Immunohistochemical analysis of paraffin-embedded human liver tissue slide using 67391-1-Ig (FGL1 antibody) at dilution of 1:1000 (under 10x lens). Heat mediated antigen retrieval with Tris-EDTA buffer (pH 9.0).



Immunofluorescent analysis of (-20°C Ethanol) fixed HepG2 cells using FGL1 antibody (67391-1-Ig, Clone: 2B11C6) at dilution of 1:400 and CoraLite®488-Conjugated AffiniPure Goat Anti-Mouse IgG(H+L), CL594-Phalloidin (red).