

For Research Use Only

ZG16 Monoclonal antibody, PBS Only

Catalog Number: 67389-1-PBS



Basic Information

Catalog Number: 67389-1-PBS	GenBank Accession Number: BC029149	Purification Method: Protein A purification
Concentration: 1mg/ml	GeneID (NCBI): 653808	CloneNo.: 1A7B9
Source: Mouse	UNIPROT ID: O60844	
Isotype: IgG1	Full Name: zymogen granule protein 16 homolog (rat)	
Immunogen Catalog Number: AG11332	Calculated MW: 167 aa, 18 kDa	
	Observed MW: 16 kDa	

Applications

Tested Applications:
WB, IHC, IF-P, IF-Fro, Indirect ELISA

Species Specificity:
human, mouse, rat, pig

Background Information

Zymogen granule protein 16 (ZG16) has a Jacalin-like lectin domain, which is mainly expressed by mucus-secreting cells, including goblet cells in the intestine. It's reported that ZG16 expression was significantly decreased in colorectal cancer compared to normal tissue. ZG16 gene expression and copy number variations (CNV) were associated with multiple molecular and clinicopathological features of CRC including MSI, MLH1 silencing and so on. It's found that ZG16 is negatively correlated with lymphatic invasive and distant metastasis. Besides, overexpression of ZG16 blocks PD-L1 expression in colorectal cancer, and promotes NK cells survival and proliferation. Very importantly, ZG16 suppresses colorectal tumor growth via the immune system. (PMID: 33360840, 21893569)

Storage

Storage:
Store at -80°C.

The product is shipped with ice packs. Upon receipt, store it immediately at -80°C

Storage Buffer:
PBS only, pH7.3

For technical support and original validation data for this product please contact:

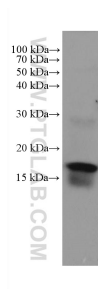
T: 4006900926

E: Proteintech-CN@ptglab.com

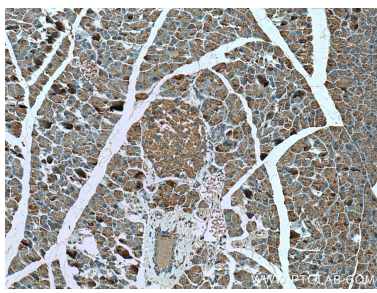
W: ptgcn.com

This product is exclusively available under Proteintech Group brand and is not available to purchase from any other manufacturer.

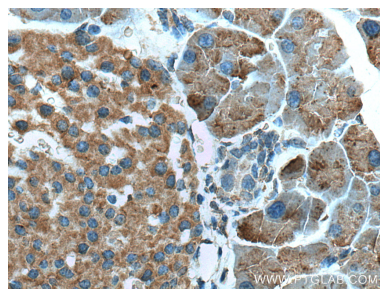
Selected Validation Data



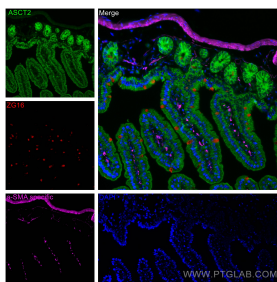
mouse colon tissue were subjected to SDS PAGE followed by western blot with 67389-1-Ig (ZG16 antibody) at dilution of 1:5000 incubated at room temperature for 1.5 hours. This data was developed using the same antibody clone with 67389-1-PBS in a different storage buffer formulation.



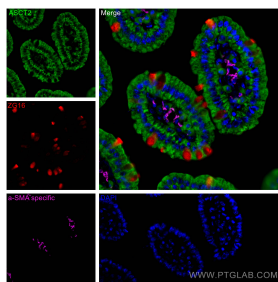
Immunohistochemical analysis of paraffin-embedded mouse pancreas tissue slide using 67389-1-Ig (ZG16 antibody) at dilution of 1:500 (under 10x lens). Heat mediated antigen retrieval with Tris-EDTA buffer (pH 9.0). This data was developed using the same antibody clone with 67389-1-PBS in a different storage buffer formulation.



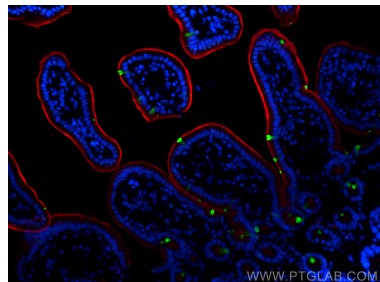
Immunohistochemical analysis of paraffin-embedded mouse pancreas tissue slide using 67389-1-Ig (ZG16 antibody) at dilution of 1:500 (under 40x lens). Heat mediated antigen retrieval with Tris-EDTA buffer (pH 9.0). This data was developed using the same antibody clone with 67389-1-PBS in a different storage buffer formulation.



Immunofluorescent analysis of (4% PFA) fixed mouse small intestine tissue using ZG16 antibody (67389-1-Ig, Clone: 1A7B9) at dilution of 1:400 and CoraLite®594-Conjugated AffiniPure Goat Anti-Mouse IgG(H+L), ASCT2 antibody (20350-1-AP, green), CoraLite® Plus 647 smooth muscle actin specific antibody (CL647-80008, Clone: 5H7, Magenta). This data was developed using the same antibody clone with 67389-1-PBS in a different storage buffer formulation.



Immunofluorescent analysis of (4% PFA) fixed mouse small intestine tissue using ZG16 antibody (67389-1-Ig, Clone: 1A7B9) at dilution of 1:400 and CoraLite®594-Conjugated AffiniPure Goat Anti-Mouse IgG(H+L), ASCT2 antibody (20350-1-AP, green), CoraLite® Plus 647 smooth muscle actin specific antibody (CL647-80008, Clone: 5H7, Magenta). This data was developed using the same antibody clone with 67389-1-PBS in a different storage buffer formulation.



Immunofluorescent analysis of (4% PFA) fixed frozen OCT-embedded mouse small intestine tissue using ZG16 antibody (67389-1-Ig, Clone: 1A7B9) at dilution of 1:400 and CoraLite®488-Conjugated Goat Anti-Mouse IgG(H+L) (SA00013-1), CD163 antibody (83285-4-RR, Clone: 240233A3, red). This data was developed using the same antibody clone with 67389-1-PBS in a different storage buffer formulation.