

SEC11A Monoclonal antibody

Catalog Number: 67379-1-Ig

Basic Information

Catalog Number: 67379-1-Ig	GenBank Accession Number: BC000359	Purification Method: Protein A purification
Size: 2400 µg/ml	GeneID (NCBI): 23478	CloneNo.: 2B11G12
Source: Mouse	UNIPROT ID: P67812	Recommended Dilutions: WB 1:2000-1:10000 IHC 1:50-1:500
Isotype: IgG2b	Full Name: SEC11 homolog A (S. cerevisiae)	
Immunogen Catalog Number: AG6610	Calculated MW: 21 kDa Observed MW: 17-21 kDa	

Applications

Tested Applications:
IHC, WB, ELISA

Species Specificity:
Human, Mouse, Rat

Note-IHC: suggested antigen retrieval with TE buffer pH 9.0; (*) Alternatively, antigen retrieval may be performed with citrate buffer pH 6.0

Positive Controls:

WB : HeLa cells, HSC-T6 cells, HepG2 cells, Jurkat cells, K-562 cells, NIH/3T3 cells, 4T1 cells

IHC : human liver cancer tissue,

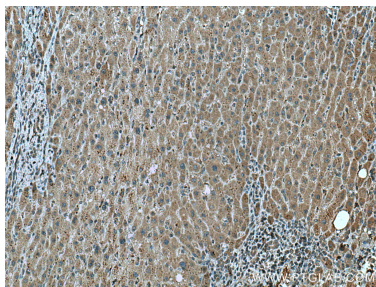
Background Information

SEC11A (Signal peptidase complex catalytic subunit SEC11A) is also named as SEC11L1, SPC18, SPCS4A and belongs to the peptidase S26B family. It is a component of the microsomal signal peptidase complex which removes signal peptides from nascent proteins as they are translocated into the lumen of the endoplasmic reticulum. SEC11A has some isoforms with the molecular mass of 17-21 kDa.

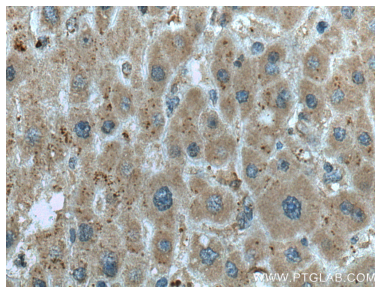
Storage

Storage:
Store at -20°C.
Storage Buffer:
PBS with 0.02% sodium azide and 50% glycerol pH 7.3.
Aliquoting is unnecessary for -20°C storage

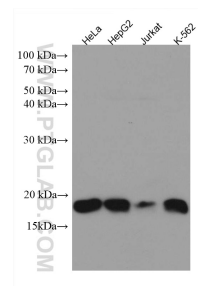
Selected Validation Data



Immunohistochemical analysis of paraffin-embedded human liver cancer tissue slide using 67379-1-Ig (SEC11A antibody) at dilution of 1:200 (under 10x lens). Heat mediated antigen retrieval with Tris-EDTA buffer (pH 9.0).



Immunohistochemical analysis of paraffin-embedded human liver cancer tissue slide using 67379-1-Ig (SEC11A antibody) at dilution of 1:200 (under 40x lens). Heat mediated antigen retrieval with Tris-EDTA buffer (pH 9.0).



Various lysates were subjected to SDS PAGE followed by western blot with 67379-1-Ig (SEC11A antibody) at dilution of 1:5000 incubated at room temperature for 1.5 hours.