

For Research Use Only

eqRFP630/eqRFP611 Monoclonal antibody

Catalog Number: 67378-1-Ig **7 Publications**



Basic Information

Catalog Number: 67378-1-Ig	GenBank Accession Number: GeneID (NCBI): UNIPROT ID: Q8ISF8	Purification Method: Protein A purification
Size: 1000 ug/ml	Full Name: Calculated MW: 26 kDa	CloneNo.: 1E3C5
Source: Mouse		Recommended Dilutions: WB 1:5000-1:100000
Isotype: IgG2b		
Immunogen Catalog Number: AG27669		

Applications

Tested Applications: WB, ELISA	Positive Controls: WB : ag27669,
Cited Applications: WB, IF	
Species Specificity: recombinant protein	
Cited Species: human, mouse, yeast	

Background Information

Red fluorescent proteins (RFPs) is a collective term referring to a heterogenous group of red chromophore-carrying proteins, originating from various species and forming different protein lineages. The original RFP (dsRed) is a 225 amino acid fluorescent protein (25.9 kDa) derived from *Discosoma* sp.. It emits red light with a peak wavelength of 593 nm upon excitation by green light (excitation peak at 558 nm). When fused with other proteins, RFP serves as a versatile reporter protein e.g. for quantifying expression levels or facilitates visualization of subcellular localization through fluorescence microscopy. RFP611 and RFP 630 is a basic (constitutively fluorescent) red fluorescent protein derived from *Entacmaea quadricolor*. This antibody is a mouse (IgG2b) monoclonal antibody raised against RFP (eqFP611), it can also recognize eqFP630. This antibody does not recognize DsRed or mRFP.

Notable Publications

Author	Pubmed ID	Journal	Application
Runmin Che	36449354	Autophagy	WB
Jens Tilsner	35987858	Mol Plant Pathol	WB
Tejinder Pal Khaket	39161732	PNAS Nexus	WB

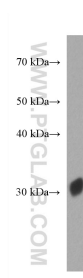
Storage

Storage:
Store at -20°C. Stable for one year after shipment.
Storage Buffer:
PBS with 0.02% sodium azide and 50% glycerol pH 7.3.
Aliquoting is unnecessary for -20°C storage

For technical support and original validation data for this product please contact:
T: 4006900926 E: Proteintech-CN@ptglab.com W: ptgcn.com

This product is exclusively available under Proteintech Group brand and is not available to purchase from any other manufacturer.

Selected Validation Data



RFP tagged protein were subjected to SDS PAGE followed by western blot with 67378-1-Ig (RFP antibody) at dilution of 1:80000 incubated at room temperature for 1.5 hours.