

PNPLA3 Monoclonal antibody

Catalog Number: 67369-1-Ig **1 Publications**

Basic Information

Catalog Number: 67369-1-Ig	GenBank Accession Number: BC065195	Purification Method: Protein G purification
Size: 1900 µg/ml	GeneID (NCBI): 80339	CloneNo.: 1D2B11
Source: Mouse	UNIPROT ID: Q9NST1	Recommended Dilutions: WB 1:2000-1:10000 IHC 1:250-1:1000 IF/ICC 1:400-1:1600
Isotype: IgG1	Full Name: patatin-like phospholipase domain containing 3	
Immunogen Catalog Number: AG27407	Observed MW: 53 kDa	

Applications

Tested Applications: IF/ICC, IHC, WB, ELISA	Positive Controls:
Cited Applications: WB	WB : HeLa cells, HepG2 cells, L02 cells, SMMC-7721 cells, HuH-7 cells, HSC-T6 cells
Species Specificity: Human, Rat, pig	IHC : human liver cancer tissue,
Cited Species: human	IF/ICC : HeLa cells,
Note-IHC: suggested antigen retrieval with TE buffer pH 9.0; (*) Alternatively, antigen retrieval may be performed with citrate buffer pH 6.0	

Background Information

PNPLA3 belongs to a family of proteins that share a domain that was first identified in patatin, a major soluble protein of potato tubers with nonspecific acyl hydrolase activity. The domain differs from classical lipases by employing a catalytic dyad (Ser-Asp), rather than a catalytic triad, to effect hydrolysis. PNPLA3 is expressed primarily in liver and adipose tissue, in which it partitions to membranes and lipid droplets. Real-time PCR of cDNA from human tissues indicated that PNPLA3 expression was highest in the liver, followed by skin and adipose tissue. PNPLA3 is expressed at the highest levels in adipose tissue of mice. The PNPLA3 protein was expected at 50-70 kDa, as observed; the additional band at approximately 130-150 kDa is a oligomer bands. (PMID: 20385813, PMID: 24931521, PMID: 23023705)

Notable Publications

Author	Pubmed ID	Journal	Application
Jiwoon Park	36049612	J Hepatol	WB

Storage

Storage:
Store at -20°C. Stable for one year after shipment.
Storage Buffer:
PBS with 0.02% sodium azide and 50% glycerol pH 7.3.
Aliquoting is unnecessary for -20°C storage

For technical support and original validation data for this product please contact:

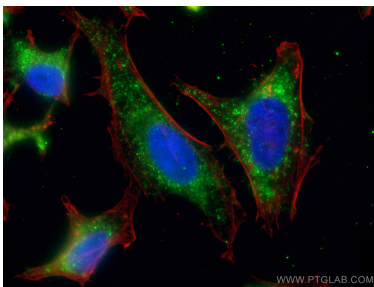
T: 4006900926

E: Proteintech-CN@ptglab.com

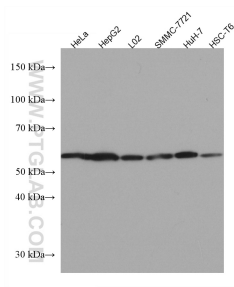
W: ptgcn.com

This product is exclusively available under Proteintech Group brand and is not available to purchase from any other manufacturer.

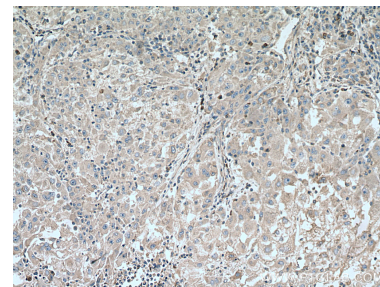
Selected Validation Data



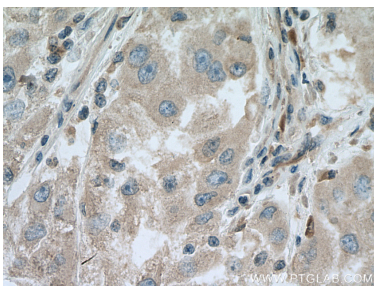
Immunofluorescent analysis of (4% PFA) fixed HeLa cells using PNPLA3 antibody (67369-1-Ig, Clone: 1D2B11) at dilution of 1:800 and CoraLite®488-Conjugated AffiniPure Goat Anti-Mouse IgG(H+L).



Various lysates were subjected to SDS PAGE followed by western blot with 67369-1-Ig (PNPLA3 antibody) at dilution of 1:3000 incubated at room temperature for 1.5 hours.



Immunohistochemical analysis of paraffin-embedded human liver cancer tissue slide using 67369-1-Ig (PNPLA3 antibody) at dilution of 1:500 (under 10x lens). Heat mediated antigen retrieval with Tris-EDTA buffer (pH 9.0).



Immunohistochemical analysis of paraffin-embedded human liver cancer tissue slide using 67369-1-Ig (PNPLA3 antibody) at dilution of 1:500 (under 40x lens). Heat mediated antigen retrieval with Tris-EDTA buffer (pH 9.0).