

For Research Use Only

UGDH Monoclonal antibody

Catalog Number: 67360-1-Ig

Featured Product

2 Publications



Basic Information

Catalog Number:

67360-1-Ig

Concentration:

1000 ug/ml

Source:

Mouse

Isotype:

IgG1

Immunogen Catalog Number:

AG29747

GenBank Accession Number:

BC022781

GeneID (NCBI):

7358

UNIPROT ID:

O60701

Full Name:

UDP-glucose dehydrogenase

Calculated MW:

494 aa, 55 kDa

Observed MW:

55-60 kDa

Purification Method:

Protein G purification

CloneNo.:

1E2E1

Recommended Dilutions:

WB: 1:5000-1:50000

IHC: 1:500-1:2000

IF/ICC: 1:200-1:800

Applications

Tested Applications:

WB, IHC, IF/ICC, ELISA

Cited Applications:

WB, IF, IP

Species Specificity:

human, mouse, rat, pig

Cited Species:

human, mouse

Note-IHC: suggested antigen retrieval with TE buffer pH 9.0; (*) Alternatively, antigen retrieval may be performed with citrate buffer pH 6.0

Positive Controls:

WB : A431 cells, rat brain tissue, HeLa cells, HepG2 cells, HSC-T6 cells

IHC : human liver cancer tissue,

IF/ICC : HepG2 cells,

Background Information

UDP-glucose 6-dehydrogenase (UGDH) is a key enzyme in the uronic acid pathway, and converts UDP-glucose (UDP-Glc) to UDP-glucuronic acid (UDP-GlcA). UGDH is critical to the production of extracellular matrix components which are essential to the migration and connectivity of neurons early in human brain development. UDP-GlcA is an essential sugar nucleotide precursor and a key component in the synthesis and stepwise degradation of glycosaminoglycans (GAGs). The protein subunit migrates on SDS-PAGE at ~55 kDa. (PMID: 32175296, PMID: 21576248, PMID: 31243371).

Notable Publications

Author	Pubmed ID	Journal	Application
Bao Guo	35617808	Biochem Biophys Res Commun	WB
Weiren Lan	40150862	Adv Sci (Weinh)	WB,IP,IF

Storage

Storage:

Store at -20°C. Stable for one year after shipment.

Storage Buffer:

PBS with 0.02% sodium azide and 50% glycerol, pH7.3

Aliquoting is unnecessary for -20°C storage

For technical support and original validation data for this product please contact:

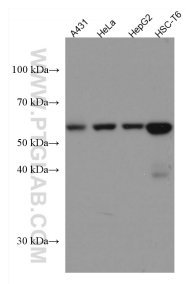
T: 4006900926

E: Proteintech-CN@ptglab.com

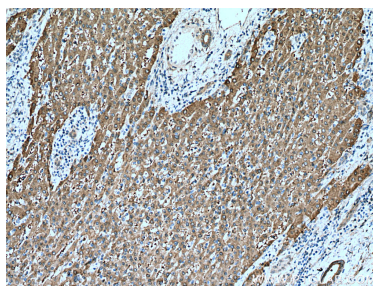
W: ptgcn.com

This product is exclusively available under Proteintech Group brand and is not available to purchase from any other manufacturer.

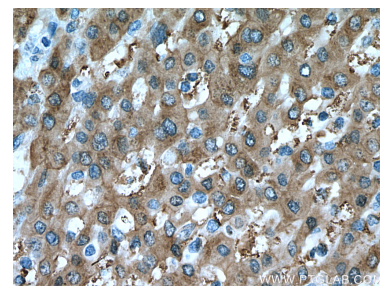
Selected Validation Data



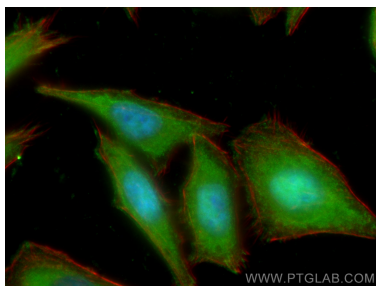
Various lysates were subjected to SDS PAGE followed by western blot with 67360-1-Ig (UGDH antibody) at dilution of 1:20000 incubated at room temperature for 1.5 hours.



Immunohistochemical analysis of paraffin-embedded human liver cancer tissue slide using 67360-1-Ig (UGDH antibody) at dilution of 1:1000 (under 10x lens). Heat mediated antigen retrieval with Tris-EDTA buffer (pH 9.0).



Immunohistochemical analysis of paraffin-embedded human liver cancer tissue slide using 67360-1-Ig (UGDH antibody) at dilution of 1:1000 (under 40x lens). Heat mediated antigen retrieval with Tris-EDTA buffer (pH 9.0).



Immunofluorescent analysis of (-20°C Ethanol) fixed HepG2 cells using UGDH antibody (67360-1-Ig, Clone: 1E2E1) at dilution of 1:400 and CoraLite®488-Conjugated AffiniPure Goat Anti-Mouse IgG(H+L), CL594-Phalloidin (red).