

For Research Use Only

# RALBP1 Monoclonal antibody

Catalog Number: 67359-1-Ig



## Basic Information

Catalog Number:

67359-1-Ig

Size:

1900 µg/ml

Source:

Mouse

Isotype:

IgG1

Immunogen Catalog Number:

AG28618

GenBank Accession Number:

BC013126

GeneID (NCBI):

10928

UNIPROT ID:

Q15311

Full Name:

ralA binding protein 1

Calculated MW:

655 aa, 76 kDa

Observed MW:

95 kDa

Purification Method:

Protein G purification

CloneNo.:

1B2F5

Recommended Dilutions:

WB 1:1000-1:6000

## Applications

Tested Applications:

FC, WB, ELISA

Species Specificity:

Human, mouse

Positive Controls:

WB : NIH/3T3 cells, Jurkat cells, HEK-293 cells, LNCaP cells, MCF-7 cells

## Background Information

### Storage

Storage:

Store at -20°C.

Storage Buffer:

PBS with 0.02% sodium azide and 50% glycerol pH 7.3.

Aliquoting is unnecessary for -20°C storage

For technical support and original validation data for this product please contact:

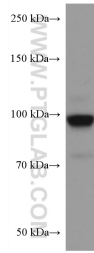
T: 4006900926

E: [Proteintech-CN@ptglab.com](mailto:Proteintech-CN@ptglab.com)

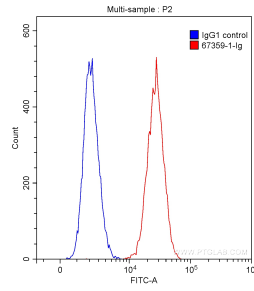
W: [ptgcn.com](http://ptgcn.com)

This product is exclusively available under Proteintech Group brand and is not available to purchase from any other manufacturer.

## Selected Validation Data



NIH/3T3 cells were subjected to SDS PAGE followed by western blot with 67359-1-Ig (RALBP1 antibody) at dilution of 1:3000 incubated at room temperature for 1.5 hours.



1X10<sup>6</sup> HEK-293 cells were stained with 0.20 ug/test Anti-Human RALBP1 (67359-1-Ig, Clone:1B2F5) (red) or 0.20 ug control antibody (blue) and CoraLite@488-Conjugated AffiniPure Goat Anti-Mouse IgG(H+L) with dilution 1:1000. Fixed with 90% MeOH.