

For Research Use Only

SEC63 Monoclonal antibody

Catalog Number: 67352-1-Ig



Basic Information

Catalog Number: 67352-1-Ig	GenBank Accession Number: BC047221	Purification Method: Protein G purification
Concentration: 1000 ug/ml	GeneID (NCBI): 11231	CloneNo.: 1C10E1
Source: Mouse	UNIPROT ID: Q9UGP8	Recommended Dilutions: WB 1:5000-1:50000 IF/ICC 1:200-1:800
Isotype: IgG1	Full Name: SEC63 homolog (S. cerevisiae)	
Immunogen Catalog Number: AG5783	Calculated MW: 88 kDa	
	Observed MW: 90 kDa	

Applications

Tested Applications: WB, IF/ICC, ELISA	Positive Controls:
Species Specificity: human	WB : HEK-293 cells, HepG2 cells, Jurkat cells, K-562 cells IF/ICC : HEK-293 cells,

Background Information

SEC63 is a integral endoplasmic reticulum (ER) membrane protein. SEC63 and SEC62 form a dimeric complex and play a central role in translocation of nascent and newly synthesized precursor polypeptides into the ER. Mutations in the gene encoding SEC63 cause polycystic liver disease in humans. The intact SEC63 protein is usually detected around 83-90 kDa, while smaller cleavage products can be observed by autophagy proteolysis (PMID: 25052096)

Storage

Storage:
Store at -20°C. Stable for one year after shipment.
Storage Buffer:
PBS with 0.02% sodium azide and 50% glycerol, pH7.3
Aliquoting is unnecessary for -20°C storage

For technical support and original validation data for this product please contact:

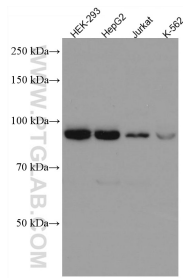
T: 4006900926

E: Proteintech-CN@ptglab.com

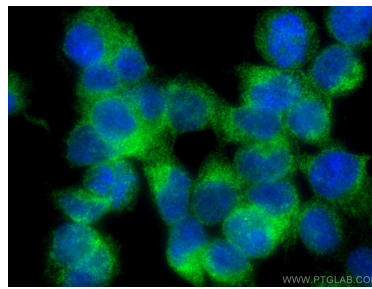
W: ptgcn.com

This product is exclusively available under Proteintech Group brand and is not available to purchase from any other manufacturer.

Selected Validation Data



Various lysates were subjected to SDS PAGE followed by western blot with 67352-1-Ig (SEC63 antibody) at dilution of 1:20000 incubated at room temperature for 1.5 hours.



Immunofluorescent analysis of (4% PFA) fixed HEK-293 cells using SEC63 antibody (67352-1-Ig, Clone: 1C10E1) at dilution of 1:400 and CoraLite®488-Conjugated AffiniPure Goat Anti-Mouse IgG(H+L).