

For Research Use Only

ANAPC5 Monoclonal antibody

Catalog Number: 67348-1-Ig **1 Publications**



Basic Information

Catalog Number: 67348-1-Ig	GenBank Accession Number: BC001081	Purification Method: Protein G purification
Size: 1200 µg/ml	GeneID (NCBI): 51433	CloneNo.: 2A7G5
Source: Mouse	UNIPROT ID: Q9UJX4	Recommended Dilutions: WB 1:5000-1:50000 IHC 1:250-1:1000 IF-P 1:200-1:800
Isotype: IgG1	Full Name: anaphase promoting complex subunit 5	
Immunogen Catalog Number: AG7409	Calculated MW: 85 kDa	
	Observed MW: 85 kDa, 72 kDa	

Applications

Tested Applications: IF-P, IHC, WB, ELISA	Positive Controls:
Cited Applications: WB	WB : HEK-293 cells, HepG2 cells, Jurkat cells, HSC-T6 cells, NIH/3T3 cells, 4T1 cells
Species Specificity: Human, Mouse, Rat	IHC : human breast cancer tissue,
Cited Species: human	IF-P : human breast cancer tissue,
Note-IHC: suggested antigen retrieval with TE buffer pH 9.0; (*) Alternatively, antigen retrieval may be performed with citrate buffer pH 6.0	

Background Information

Notable Publications

Author	Pubmed ID	Journal	Application
Qi Li	39018254	Adv Sci (Weinh)	WB

Storage

Storage:
Store at -20°C.
Storage Buffer:
PBS with 0.02% sodium azide and 50% glycerol pH 7.3.
Aliquoting is unnecessary for -20°C storage

For technical support and original validation data for this product please contact:

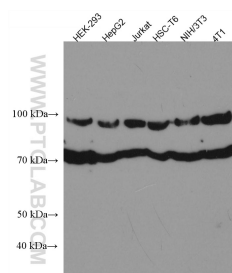
T: 4006900926

E: Proteintech-CN@ptglab.com

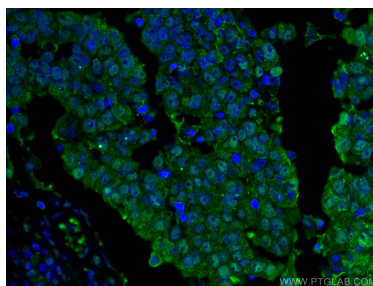
W: ptgcn.com

This product is exclusively available under Proteintech Group brand and is not available to purchase from any other manufacturer.

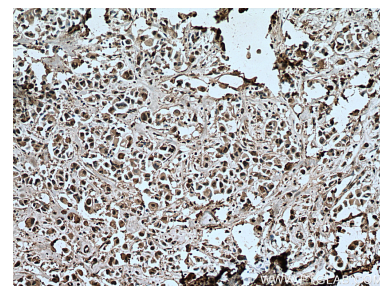
Selected Validation Data



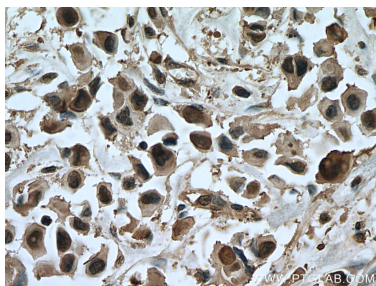
Various lysates were subjected to SDS PAGE followed by western blot with 67348-1-Ig (ANAPC5 antibody) at dilution of 1:10000 incubated at room temperature for 1.5 hours.



Immunofluorescent analysis of (4% PFA) fixed human breast cancer tissue using ANAPC5 antibody (67348-1-Ig, Clone: 2A7G5) at dilution of 1:400 and CoraLite®488-Conjugated Goat Anti-Mouse IgG(H+L).



Immunohistochemical analysis of paraffin-embedded human breast cancer tissue slide using 67348-1-Ig (ANAPC5 antibody) at dilution of 1:500 (under 10x lens). Heat mediated antigen retrieval with Tris-EDTA buffer (pH 9.0).



Immunohistochemical analysis of paraffin-embedded human breast cancer tissue slide using 67348-1-Ig (ANAPC5 antibody) at dilution of 1:500 (under 40x lens). Heat mediated antigen retrieval with Tris-EDTA buffer (pH 9.0).