

For Research Use Only

# ALDH5A1 Monoclonal antibody

Catalog Number: 67347-1-Ig

Featured Product



## Basic Information

Catalog Number:

67347-1-Ig

Size:

1300 ug/ml

Source:

Mouse

Isotype:

IgG1

Immunogen Catalog Number:

AG11155

GenBank Accession Number:

BC034321

GeneID (NCBI):

7915

UNIPROT ID:

P51649

Full Name:

aldehyde dehydrogenase 5 family, member A1

Calculated MW:

535 aa, 57 kDa

Observed MW:

51 kDa

Purification Method:

Protein G purification

CloneNo.:

1B9H10

Recommended Dilutions:

WB 1:5000-1:50000

IHC 1:500-1:2000

IF-P 1:200-1:800

## Applications

Tested Applications:

WB, IHC, IF-P, FC (Intra), ELISA

Species Specificity:

human, mouse, rat, pig

**Note-IHC: suggested antigen retrieval with TE buffer pH 9.0; (\*) Alternatively, antigen retrieval may be performed with citrate buffer pH 6.0**

Positive Controls:

WB : L02 cells, HepG2 cells, pig brain tissue

IHC : human liver cancer tissue,

IF-P : human liver cancer tissue, mouse liver tissue

## Background Information

### Storage

Storage:

Store at -20°C. Stable for one year after shipment.

Storage Buffer:

PBS with 0.02% sodium azide and 50% glycerol pH 7.3.

Aliquoting is unnecessary for -20°C storage

For technical support and original validation data for this product please contact:

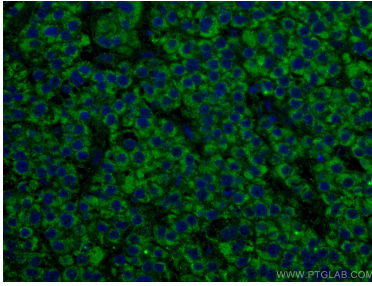
T: 4006900926

E: [Proteintech-CN@ptglab.com](mailto:Proteintech-CN@ptglab.com)

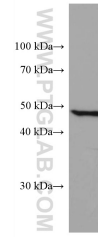
W: [ptgcn.com](http://ptgcn.com)

This product is exclusively available under Proteintech Group brand and is not available to purchase from any other manufacturer.

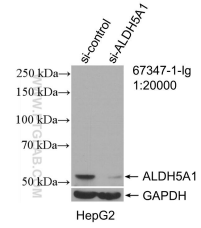
## Selected Validation Data



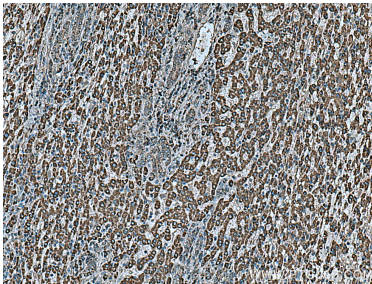
Immunofluorescent analysis of (4% PFA) fixed human liver cancer tissue using ALDH5A1 antibody (67347-1-Ig, Clone: 1B9H10) at dilution of 1:400 and CoraLite®488-Conjugated AffiniPure Goat Anti-Mouse IgG(H+L). DAPI (blue).



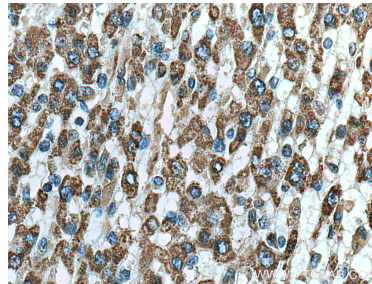
L02 cells were subjected to SDS PAGE followed by western blot with 67347-1-Ig (ALDH5A1 antibody) at dilution of 1:50000 incubated at room temperature for 1.5 hours.



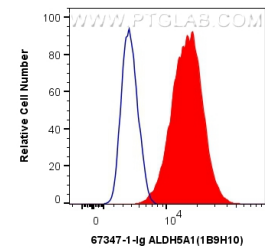
WB result of ALDH5A1 antibody (67347-1-Ig; 1:20000; incubated at room temperature for 1.5 hours) with sh-Control and sh-ALDH5A1 transfected HepG2 cells.



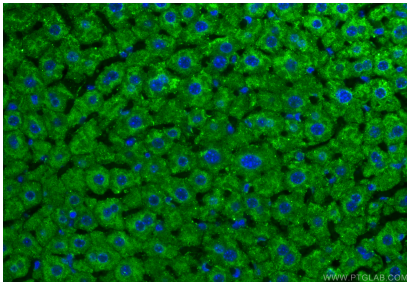
Immunohistochemical analysis of paraffin-embedded human liver cancer tissue slide using 67347-1-Ig (ALDH5A1 antibody) at dilution of 1:1000 (under 10x lens). Heat mediated antigen retrieval with Tris-EDTA buffer (pH 9.0).



Immunohistochemical analysis of paraffin-embedded human liver cancer tissue slide using 67347-1-Ig (ALDH5A1 antibody) at dilution of 1:1000 (under 40x lens). Heat mediated antigen retrieval with Tris-EDTA buffer (pH 9.0).



1X10<sup>6</sup> A431 cells were intracellularly stained with 0.4 ug Anti-Human ALDH5A1 (67347-1-Ig, Clone:1B9H10) and CoraLite®488-Conjugated AffiniPure Goat Anti-Mouse IgG(H+L) at dilution 1:1000 (red), or 0.4 ug Mouse IgG1 Isotype Control (MOPC-21) (65124-1-Ig, Clone: MOPC-21) (blue). Cells were fixed with 4% PFA and permeabilized with Flow Cytometry Perm Buffer (PF00011-C).



Immunofluorescent analysis of (4% PFA) fixed paraffin-embedded mouse liver tissue using ALDH5A1 antibody (67347-1-Ig, Clone: 1B9H10) at dilution of 1:400 and CoraLite®488-Conjugated Goat Anti-Mouse IgG(H+L) (SA00013-1). Heat mediated antigen retrieval with Tris-EDTA buffer (pH 9.0).