

For Research Use Only

HSP20 Monoclonal antibody

Catalog Number: 67327-1-Ig **1 Publications**



Basic Information

Catalog Number:

67327-1-Ig

Size:

1700 μ g/ml

Source:

Mouse

Isotype:

IgG2a

Immunogen Catalog Number:

AG10484

GenBank Accession Number:

BC068046

GeneID (NCBI):

126393

UNIPROT ID:

O14558

Full Name:

heat shock protein, alpha-crystallin-related, B6

Calculated MW:

160 aa, 17 kDa

Observed MW:

17 kDa

Purification Method:

Protein A purification

CloneNo.:

1G7D2

Recommended Dilutions:

WB 1:2000-1:20000

IHC 1:500-1:2000

IF 1:200-1:800

Applications

Tested Applications:

IF-P, IHC, WB, ELISA

Cited Applications:

IHC

Species Specificity:

Human, mouse, rat, pig

Cited Species:

human

Note-IHC: suggested antigen retrieval with TE buffer pH 9.0; (*) Alternatively, antigen retrieval may be performed with citrate buffer pH 6.0

Positive Controls:

WB : pig skeletal muscle tissue, mouse heart tissue, rat heart tissue, mouse skeletal muscle tissue, rat skeletal muscle tissue

IHC : human heart tissue,

IF : mouse heart tissue,

Background Information

Hsp20 is a member of the small heat shock superfamily of proteins that function as chaperones to prevent protein misfolding through adenosine triphosphate-independent processes. It is widely expressed but is most abundant in cardiac, skeletal, and smooth muscles. Phosphorylation of HSP20 at Ser16 was elevated in human failing hearts as well as in murine hearts after I/R injury indicating its cardioprotective function.

Notable Publications

Author	Pubmed ID	Journal	Application
Shiqi Gao	38237739	Lab Invest	IHC

Storage

Storage:

Store at -20°C. Stable for one year after shipment.

Storage Buffer:

PBS with 0.02% sodium azide and 50% glycerol pH 7.3.

Aliquoting is unnecessary for -20°C storage

For technical support and original validation data for this product please contact:

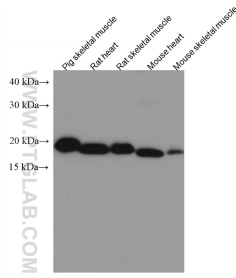
T: 4006900926

E: Proteintech-CN@ptglab.com

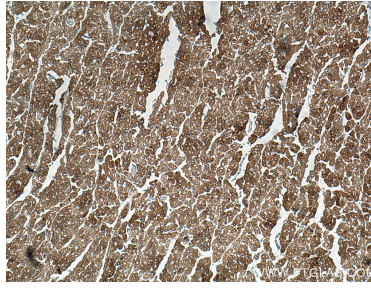
W: ptgcn.com

This product is exclusively available under Proteintech Group brand and is not available to purchase from any other manufacturer.

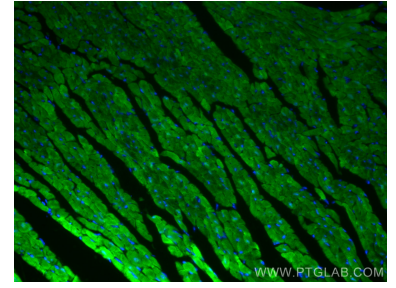
Selected Validation Data



Various lysates were subjected to SDS PAGE followed by western blot with 67327-1-Ig (HSP20 antibody) at dilution of 1:10000 incubated at room temperature for 1.5 hours.



Immunohistochemical analysis of paraffin-embedded human heart tissue slide using 67327-1-Ig (HSP20 antibody) at dilution of 1:1000 (under 10x lens). Heat mediated antigen retrieval with Tris-EDTA buffer (pH 9.0).



Immunofluorescent analysis of (4% PFA) fixed mouse heart tissue using HSP20 antibody (67327-1-Ig, Clone: 1G7D2) at dilution of 1:400 and CoraLite®488-Conjugated AffiniPure Goat Anti-Mouse IgG(H+L).