

## LAMR1/RPSA Monoclonal antibody

Catalog Number: 67324-1-Ig 2 Publications

## Basic Information

<b>Catalog Number:</b> 67324-1-Ig	<b>GenBank Accession Number:</b> BC050688	<b>Purification Method:</b> Thiophilic affinity chromatograph
<b>Size:</b> 1900 ug/ml	<b>GeneID (NCBI):</b> 3921	<b>CloneNo.:</b> 2A9A1
<b>Source:</b> Mouse	<b>UNIPROT ID:</b> P08865	<b>Recommended Dilutions:</b> WB 1:5000-1:50000 IHC 1:500-1:2000 IF/ICC 1:400-1:1600
<b>Isotype:</b> IgM	<b>Full Name:</b> ribosomal protein SA	
<b>Immunogen Catalog Number:</b> AG6190	<b>Calculated MW:</b> 33 kDa <b>Observed MW:</b> 37-40 kDa	

## Applications

<b>Tested Applications:</b> WB, IHC, IF/ICC, ELISA	<b>Positive Controls:</b>
<b>Cited Applications:</b> WB	<b>WB :</b> HeLa cells, HEK-293 cells, HepG2 cells, COLO 320 cells, Jurkat cells, HSC-T6 cells, NIH/3T3 cells
<b>Species Specificity:</b> human, mouse, rat	<b>IHC :</b> human lung cancer tissue,
<b>Cited Species:</b> human, mouse, hamster	<b>IF/ICC :</b> HepG2 cells,
<b>Note-IHC: suggested antigen retrieval with TE buffer pH 9.0; (*) Alternatively, antigen retrieval may be performed with citrate buffer pH 6.0</b>	

## Background Information

The ribosomal protein SA (RPSA), previously named 67 kD laminin receptor(67LR), 37 kD laminin receptor precursor (37LRP) and p40 ribosome-associated protein, is a multifunctional protein, that plays a role in a number of pathological processes, such as cancer and prion diseases. It is overexpressed in various cancer cell lines, and the level of the laminin receptor transcript is higher in colon carcinoma tissue and lung cancer cell line than their normal counterparts.

## Notable Publications

Author	Pubmed ID	Journal	Application
Xiangwei Shi	39000311	Int J Mol Sci	WB
Lele Li	37070131	J Cell Mol Med	WB

## Storage

**Storage:**  
Store at -20°C. Stable for one year after shipment.  
**Storage Buffer:**  
PBS with 0.02% sodium azide and 50% glycerol pH 7.3.  
 Aliquoting is unnecessary for -20°C storage

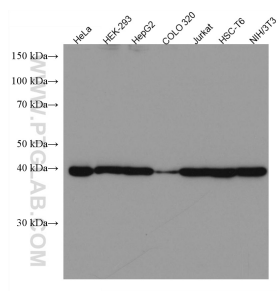
For technical support and original validation data for this product please contact:

T: 4006900926

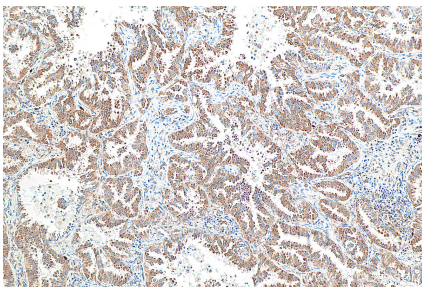
E: [Proteintech-CN@ptglab.com](mailto:Proteintech-CN@ptglab.com)W: [ptgcn.com](http://ptgcn.com)

This product is exclusively available under Proteintech Group brand and is not available to purchase from any other manufacturer.

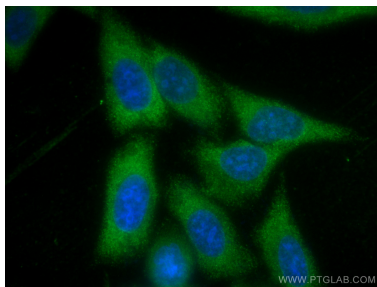
## Selected Validation Data



Various lysates were subjected to SDS PAGE followed by western blot with 67324-1-Ig (LAMR1/RPSA antibody) at dilution of 1:10000 incubated at room temperature for 1.5 hours.



Immunohistochemical analysis of paraffin-embedded human lung cancer tissue slide using 67324-1-Ig (LAMR1/RPSA antibody) at dilution of 1:1000 (under 10x lens). Heat mediated antigen retrieval with Tris-EDTA buffer (pH 9.0).



Immunofluorescent analysis of (-20°C Methanol) fixed HepG2 cells using LAMR1/RPSA antibody (67324-1-Ig, Clone: 2A9A1 ) at dilution of 1:800 and CoraLite®488-Conjugated AffiniPure Goat Anti-Mouse IgG(H+L).