

EPHX2 Monoclonal antibody, PBS Only

Catalog Number: 67322-1-PBS

Featured Product

Basic Information

Catalog Number:

67322-1-PBS

Size:

1mg/ml

Source:

Mouse

Isotype:

IgG2b

Immunogen Catalog Number:

AG4870

GenBank Accession Number:

BC013874

GeneID (NCBI):

2053

UNIPROT ID:

P34913

Full Name:

epoxide hydrolase 2, cytoplasmic

Calculated MW:

63 kDa

Observed MW:

56-63 kDa

Purification Method:

Protein A purification

CloneNo.:

4H6C8

Applications

Tested Applications:

WB, IHC, IF/ICC, Indirect ELISA

Species Specificity:

human, pig

Background Information

EPHX2(Epoxide hydrolase 2) acts on epoxides (alkene oxides, oxiranes) and arene oxides and plays a role in xenobiotic metabolism by degrading potentially toxic epoxides. A number of single nucleotide polymorphisms (SNPs) in human EPHX2 have been linked to cardiovascular disease risk, including increased risk of coronary heart disease, hyperlipoproteinemia, and type-2 diabetes (PMID: 14732757, 16595607, 14673705, 15845398, 17460077). It was observed in many tissues with the band of 63 kDa in the western blot. It has also been reported that the N-terminal domain might promote dimerization of EPHX2 (PMID:21553642).

Storage

Storage:

Store at -80°C.

The product is shipped with ice packs. Upon receipt, store it immediately at -80°C

Storage Buffer:

PBS Only

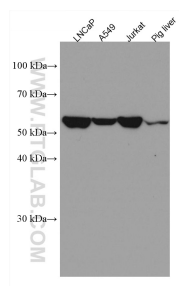
For technical support and original validation data for this product please contact:

T: 4006900926

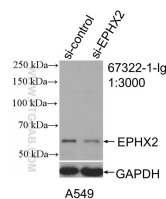
E: Proteintech-CN@ptglab.comW: ptgcn.com

This product is exclusively available under Proteintech Group brand and is not available to purchase from any other manufacturer.

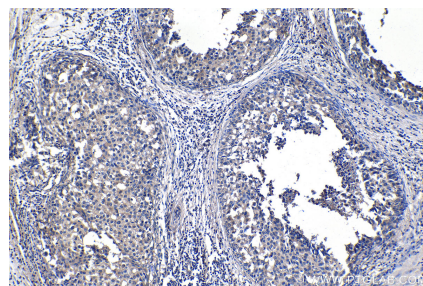
Selected Validation Data



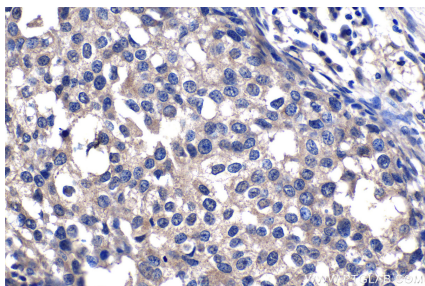
Various lysates were subjected to SDS PAGE followed by western blot with 67322-1-Ig (EPHX2 antibody) at dilution of 1:5000 incubated at room temperature for 1.5 hours. This data was developed using the same antibody clone with 67322-1-PBS in a different storage buffer formulation.



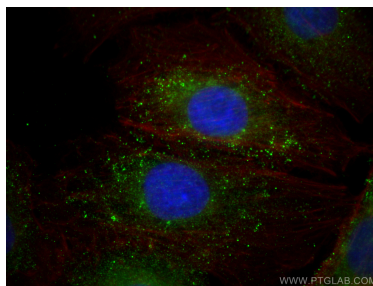
WB result of EPHX2 antibody (67322-1-Ig; 1:3000; incubated at room temperature for 1.5 hours) with sh-Control and sh-EPHX2 transfected A549 cells. This data was developed using the same antibody clone with 67322-1-PBS in a different storage buffer formulation.



Immunohistochemical analysis of paraffin-embedded human breast cancer tissue slide using 67322-1-Ig (EPHX2 antibody) at dilution of 1:4000 (under 10x lens). This data was developed using the same antibody clone with 67322-1-PBS in a different storage buffer formulation.



Immunohistochemical analysis of paraffin-embedded human breast cancer tissue slide using 67322-1-Ig (EPHX2 antibody) at dilution of 1:4000 (under 40x lens). This data was developed using the same antibody clone with 67322-1-PBS in a different storage buffer formulation.



Immunofluorescent analysis of (4% PFA) fixed A549 cells using EPHX2 antibody (67322-1-Ig, Clone: 4H6C8) at dilution of 1:400 and Multi-rAb Coralite® Plus 488-Goat Anti-Mouse Recombinant Secondary Antibody (H+L) (RGAM002), CL594-Phalloidin (red). This data was developed using the same antibody clone with 67322-1-PBS in a different storage buffer formulation.