

For Research Use Only

USP8 Monoclonal antibody

Catalog Number: 67321-1-Ig **4 Publications**



Basic Information

Catalog Number: 67321-1-Ig	GenBank Accession Number: BC110590	Purification Method: Protein A purification
Size: 1800 µg/ml	GeneID (NCBI): 9101	CloneNo.: 1E12E3
Source: Mouse	UNIPROT ID: P40818	Recommended Dilutions: WB 1:5000-1:50000 IHC 1:500-1:2000 IF 1:200-1:800
Isotype: IgG1	Full Name: ubiquitin specific peptidase 8	
Immunogen Catalog Number: AG27104	Calculated MW: 1118 aa, 128 kDa	
	Observed MW: 128 kDa	

Applications

Tested Applications:
FC, IF/ICC, IHC, WB, ELISA

Cited Applications:
WB, IP, IF, IHC, CoIP

Species Specificity:
Human, Mouse

Cited Species:
human

Note-IHC: suggested antigen retrieval with **TE buffer pH 9.0; (*) Alternatively, antigen retrieval may be performed with citrate buffer pH 6.0**

Positive Controls:

WB: HeLa cells, NIH/3T3 cells, HEK-293 cells, LNcaP cells, Jurkat cells, K-562 cells, 4T1 cells

IHC: human breast cancer tissue,

IF: HeLa cells,

Background Information

Notable Publications

Author	Pubmed ID	Journal	Application
Qianhui Sun	36328739	J Adv Res	WB
Masamune Sakamoto	38030753	J Hum Genet	WB
Jianing Tang	37867237	Adv Sci (Weinh)	WB,IF,IP,CoIP

Storage

Storage:

Store at -20°C. Stable for one year after shipment.

Storage Buffer:

PBS with 0.02% sodium azide and 50% glycerol pH 7.3.

Aliquoting is unnecessary for -20°C storage

For technical support and original validation data for this product please contact:

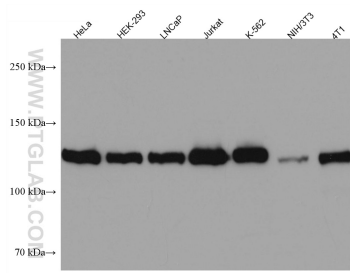
T: 4006900926

E: Proteintech-CN@ptglab.com

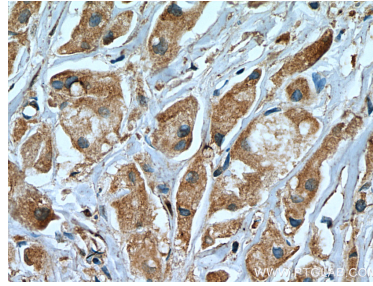
W: ptgcn.com

This product is exclusively available under Proteintech Group brand and is not available to purchase from any other manufacturer.

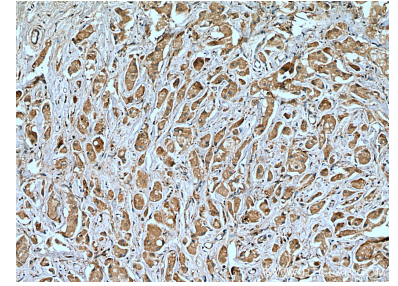
Selected Validation Data



Various lysates were subjected to SDS PAGE followed by western blot with 67321-1-Ig (USP8 antibody) at dilution of 1:20000 incubated at room temperature for 1.5 hours.



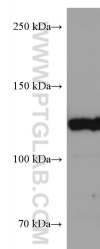
Immunohistochemical analysis of paraffin-embedded human breast cancer tissue slide using 67321-1-Ig (USP8 antibody) at dilution of 1:1000 (under 40x lens). Heat mediated antigen retrieval with Tris-EDTA buffer (pH 9.0).



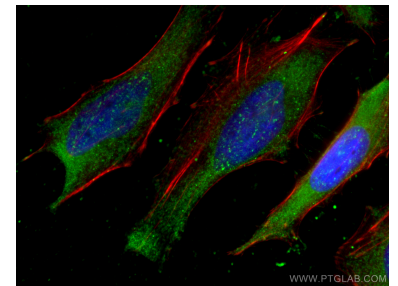
Immunohistochemical analysis of paraffin-embedded human breast cancer tissue slide using 67321-1-Ig (USP8 antibody) at dilution of 1:1000 (under 10x lens). Heat mediated antigen retrieval with Tris-EDTA buffer (pH 9.0).



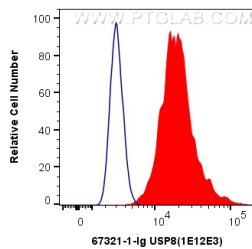
1X10⁶ HeLa cells were intracellularly stained with 0.4 ug Anti-Human USP8 (67321-1-Ig, Clone:1E12E3) and CoraLite®488-Conjugated AffiniPure Goat Anti-Mouse IgG(H+L) at dilution 1:1000 (red), or 0.4 ug Mouse IgG1 Isotype Control (MOPC-21) (65124-1-Ig, Clone: MOPC-21) (blue). Cells were fixed with 4% PFA and permeabilized with Flow Cytometry Perm Buffer (PF00011-C).



NIH/3T3 cells were subjected to SDS PAGE followed by western blot with 67321-1-Ig (USP8 antibody) at dilution of 1:20000 incubated at room temperature for 1.5 hours.



Immunofluorescent analysis of (-20°C Ethanol) fixed HeLa cells using USP8 antibody (67321-1-Ig, Clone: 1E12E3) at dilution of 1:400 and CoraLite®488-Conjugated AffiniPure Goat Anti-Mouse IgG(H+L), CL594-Phalloidin (red).



1X10⁶ HeLa cells were intracellularly stained with 0.4 ug Anti-Human USP8 (67321-1-Ig, Clone:1E12E3) and CoraLite®488-Conjugated AffiniPure Goat Anti-Mouse IgG(H+L) at dilution 1:1000 (red), or 0.4 ug Control Antibody. Cells were fixed with 4% PFA and permeabilized with Flow Cytometry Perm Buffer (PF00011-C).