

ARPC1B Monoclonal antibody

Catalog Number: 67320-1-Ig

Basic Information

Catalog Number:

67320-1-Ig

Size:

2200 µg/ml

Source:

Mouse

Isotype:

IgG1

Immunogen Catalog Number:

AG29095

GenBank Accession Number:

BC007555

GeneID (NCBI):

10095

UNIPROT ID:

O15143

Full Name:

actin related protein 2/3 complex,
subunit 1B, 41kDa

Calculated MW:

41 kDa

Observed MW:

38 kDa

Purification Method:

Protein G purification

CloneNo.:

2C8A1

Recommended Dilutions:

WB 1:5000-1:50000

IHC 1:500-1:2000

Applications

Tested Applications:

IHC, WB, ELISA

Species Specificity:

Human, rat, mouse

Note-IHC: suggested antigen retrieval with TE buffer pH 9.0; (*) Alternatively, antigen retrieval may be performed with citrate buffer pH 6.0

Positive Controls:

WB : HeLa cells, Jurkat cells, K-562 cells, THP-1 cells, rat spleen tissues

IHC : human appendicitis tissue, mouse spleen tissue

Background Information

ARPC1B also known as ARC41, p41-ARC, or p40-ARC, is one of seven subunits of the human Arp2/3 protein complex, that belongs to the SOP2 family. ARPC1B localizes on centrosomes and has a distinct role in centrosomal homeostasis. ARPC1B is both a physiological activator and substrate of Aurora A kinase, and these interactions help to maintain mitotic integrity in mammalian cells. In recent research, ARPC1B is selected as a candidate prediction marker for sensitivity of Choroidal malignant melanomas to radiotherapy.

Storage

Storage:

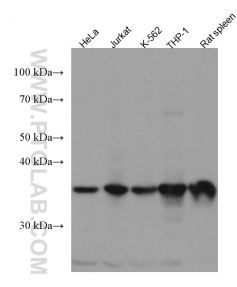
Store at -20°C. Stable for one year after shipment.

Storage Buffer:

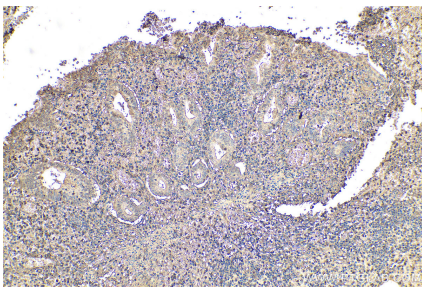
PBS with 0.02% sodium azide and 50% glycerol pH 7.3.

Aliquoting is unnecessary for -20°C storage

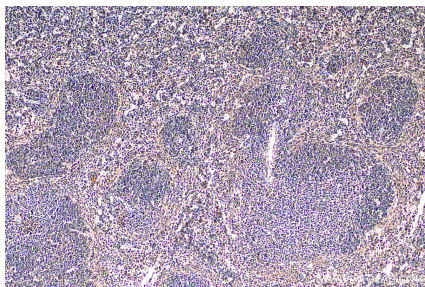
Selected Validation Data



Various lysates were subjected to SDS PAGE followed by western blot with 67320-1-Ig (ARPC1B antibody) at dilution of 1:10000 incubated at room temperature for 1.5 hours.



Immunohistochemical analysis of paraffin-embedded human appendicitis tissue slide using 67320-1-Ig (ARPC1B antibody) at dilution of 1:1000 (under 10x lens). Heat mediated antigen retrieval with Tris-EDTA buffer (pH 9.0).



Immunohistochemical analysis of paraffin-embedded mouse spleen tissue slide using 67320-1-Ig (ARPC1B antibody) at dilution of 1:1000 (under 10x lens). Heat mediated antigen retrieval with Tris-EDTA buffer (pH 9.0).