

For Research Use Only

# TRAF2 Monoclonal antibody

Catalog Number: 67315-1-Ig **4 Publications**



## Basic Information

<b>Catalog Number:</b> 67315-1-Ig	<b>GenBank Accession Number:</b> BC032410	<b>Purification Method:</b> Protein A purification
<b>Size:</b> 1700 µg/ml	<b>GeneID (NCBI):</b> 7186	<b>CloneNo.:</b> 2A4D1
<b>Source:</b> Mouse	<b>UNIPROT ID:</b> Q12933	<b>Recommended Dilutions:</b> WB 1:1000-1:6000 IF/ICC 1:400-1:1600
<b>Isotype:</b> IgG2a	<b>Full Name:</b> TNF receptor-associated factor 2	
<b>Immunogen Catalog Number:</b> AG25387	<b>Calculated MW:</b> 56 kDa	
	<b>Observed MW:</b> 53 kDa	

## Applications

<b>Tested Applications:</b> WB, IF/ICC, ELISA	<b>Positive Controls:</b>
<b>Cited Applications:</b> WB, IP	<b>WB :</b> HeLa cells, HepG2 cells, THP-1 cells, K-562 cells, Jurkat cells, L02 cells, HEK-293 cells
<b>Species Specificity:</b> Human	<b>IF/ICC :</b> HeLa cells,
<b>Cited Species:</b> human, mouse	

## Background Information

### Notable Publications

Author	Pubmed ID	Journal	Application
Rong Yan	35108540	Cell Rep	
YiFang Qin	39395513	Int J Biol Macromol	WB
Shiyao Zhou	39278292	J Ethnopharmacol	WB

## Storage

**Storage:**  
Store at -20°C. Stable for one year after shipment.  
**Storage Buffer:**  
PBS with 0.02% sodium azide and 50% glycerol pH 7.3.  
Aliquoting is unnecessary for -20°C storage

For technical support and original validation data for this product please contact:

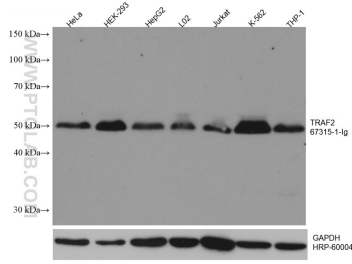
T: 4006900926

E: [Proteintech-CN@ptglab.com](mailto:Proteintech-CN@ptglab.com)

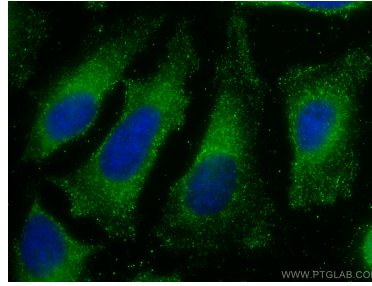
W: [ptgcn.com](http://ptgcn.com)

**This product is exclusively available under Proteintech Group brand and is not available to purchase from any other manufacturer.**

## Selected Validation Data



Various lysates were subjected to SDS PAGE followed by western blot with 67315-1-Ig (TRAF2 antibody) at dilution of 1:4000 incubated at room temperature for 1.5 hours. The membrane was stripped and reblotted with HRP-conjugated GAPDH Monoclonal antibody (HRP-60004) as loading control.



Immunofluorescent analysis of (-20°C Ethanol) fixed HeLa cells using TRAF2 antibody (67315-1-Ig, Clone: 2A4D1) at dilution of 1:800 and CoraLite®488-Conjugated Goat Anti-Mouse IgG(H+L).