

DCPS Monoclonal antibody

Catalog Number: 67311-1-Ig

Basic Information

Catalog Number:

67311-1-Ig

Size:

1600 µg/ml

Source:

Mouse

Isotype:

IgG2b

Immunogen Catalog Number:

AG8872

GenBank Accession Number:

BC014532

GeneID (NCBI):

28960

UNIPROT ID:

Q96C86

Full Name:

decapping enzyme, scavenger

Calculated MW:

337 aa, 39 kDa

Observed MW:

35-40 kDa

Purification Method:

Protein A purification

CloneNo.:

1B2E4

Recommended Dilutions:

WB 1:1000-1:6000

IHC 1:250-1:1000

IF-P 1:200-1:800

Applications

Tested Applications:

IF-P, IHC, WB, ELISA

Species Specificity:

Human, Mouse, Rat

Note-IHC: suggested antigen retrieval with TE buffer pH 9.0; (*) Alternatively, antigen retrieval may be performed with citrate buffer pH 6.0

Positive Controls:

WB : HeLa cells, rat spleen tissue, mouse brain tissue, HepG2 cells, K-562 cells, Jurkat cells

IHC : human breast cancer tissue,

IF-P : human liver cancer tissue,

Background Information

DcpS, which is a member of the histidine triad (HIT) superfamily of pyrophosphatases, is the first HIT protein with a defined biological function and identifies the HIT motif as a new mRNA decapping domain. DcpS can encode a 38-40 kDa protein, and has the potential to form a homodimer of 80 kDa (PMID: 12198172).

Storage

Storage:

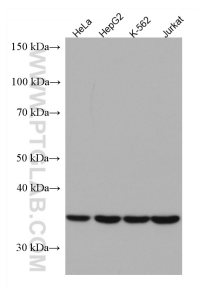
Store at -20°C. Stable for one year after shipment.

Storage Buffer:

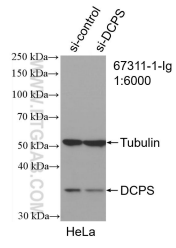
PBS with 0.02% sodium azide and 50% glycerol pH 7.3.

Aliquoting is unnecessary for -20°C storage

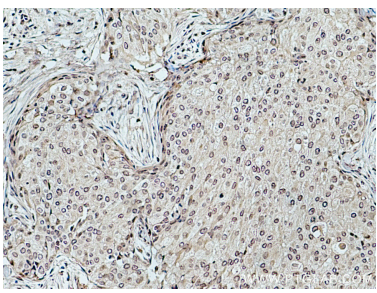
Selected Validation Data



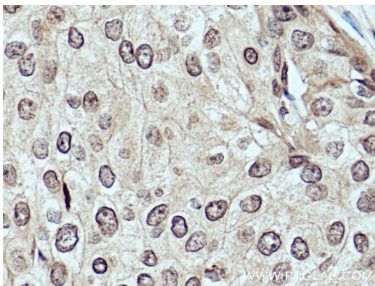
Various lysates were subjected to SDS PAGE followed by western blot with 67311-1-Ig (DCPS antibody) at dilution of 1:3000 incubated at room temperature for 1.5 hours.



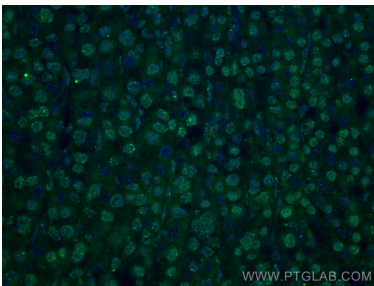
WB result of DCPS antibody (67311-1-Ig: 1:6000; incubated at room temperature for 1.5 hours) with sh-Control and sh-DCPS transfected HeLa cells.



Immunohistochemical analysis of paraffin-embedded human breast cancer tissue slide using 67311-1-Ig (DCPS antibody) at dilution of 1:500 (under 10x lens). Heat mediated antigen retrieval with Tris-EDTA buffer (pH 9.0).



Immunohistochemical analysis of paraffin-embedded human breast cancer tissue slide using 67311-1-Ig (DCPS antibody) at dilution of 1:500 (under 40x lens). Heat mediated antigen retrieval with Tris-EDTA buffer (pH 9.0).



Immunofluorescent analysis of (4% PFA) fixed human liver cancer tissue using DCPS antibody (67311-1-Ig, Clone: 1B2E4) at dilution of 1:400 and CoraLite® 488-Conjugated AffiniPure Goat Anti-Mouse IgG(H+L).