

CSE1L Monoclonal antibody

Catalog Number: 67306-1-Ig

Basic Information

Catalog Number:	GenBank Accession Number:	Purification Method:
67306-1-Ig	BC109313	Protein A purification
Size:	GeneID (NCBI):	CloneNo.:
2000 µg/ml	1434	1G1A11
Source:	UNIPROT ID:	Recommended Dilutions:
Mouse	P55060	WB 1:5000-1:50000
Isotype:	Full Name:	IHC 1:500-1:2000
IgG2a	CSE1 chromosome segregation 1-like (yeast)	IF-P 1:200-1:800
Immunogen Catalog Number:	Calculated MW:	
AG29131	971 aa, 110 kDa	
	Observed MW:	
	100 kDa	

Applications

Tested Applications:

IF-P, IHC, WB, ELISA

Species Specificity:

Human, mouse, rat

Note-IHC: suggested antigen retrieval with TE buffer pH 9.0; (*) Alternatively, antigen retrieval may be performed with citrate buffer pH 6.0

Positive Controls:

WB : HeLa cells, HSC-T6 cells, 4T1 cells, NIH/3T3 cells, Jurkat cells, HepG2 cells, HEK-293 cells

IHC : human colon cancer tissue,

IF-P : human colon cancer tissue,

Background Information

Storage

Storage:

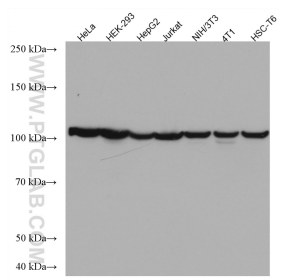
Store at -20°C. Stable for one year after shipment.

Storage Buffer:

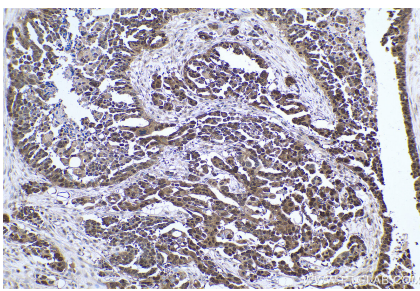
PBS with 0.02% sodium azide and 50% glycerol pH 7.3.

Aliquoting is unnecessary for -20°C storage

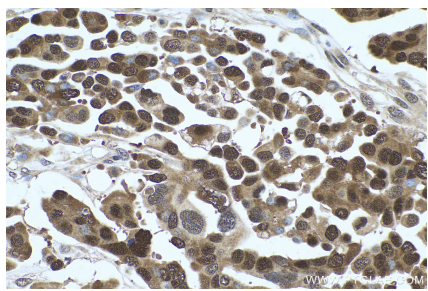
Selected Validation Data



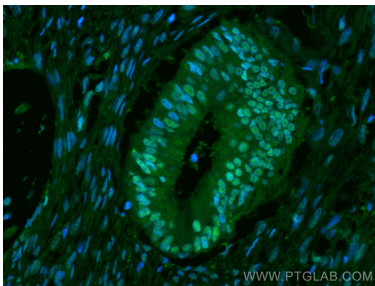
Various lysates were subjected to SDS PAGE followed by western blot with 67306-1-Ig (CSE1L antibody) at dilution of 1:10000 incubated at room temperature for 1.5 hours.



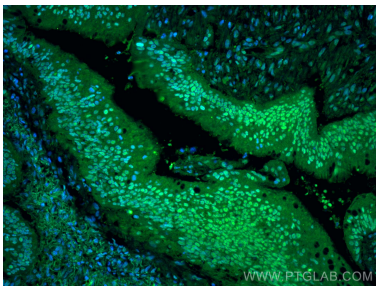
Immunohistochemical analysis of paraffin-embedded human colon cancer tissue slide using 67306-1-Ig (CSE1L antibody) at dilution of 1:1000 (under 10x lens). Heat mediated antigen retrieval with Tris-EDTA buffer (pH 9.0).



Immunohistochemical analysis of paraffin-embedded human colon cancer tissue slide using 67306-1-Ig (CSE1L antibody) at dilution of 1:1000 (under 40x lens). Heat mediated antigen retrieval with Tris-EDTA buffer (pH 9.0).



Immunofluorescent analysis of (4% PFA) fixed human colon cancer tissue using CSE1L antibody (67306-1-Ig, Clone: 1G1A11) at dilution of 1:400 and CoraLite®488-Conjugated AffiniPure Goat Anti-Mouse IgG(H+L).



Immunofluorescent analysis of (4% PFA) fixed human colon cancer tissue using CSE1L antibody (67306-1-Ig, Clone: 1G1A11) at dilution of 1:400 and CoraLite®488-Conjugated AffiniPure Goat Anti-Mouse IgG(H+L).