

For Research Use Only

PURA Monoclonal antibody

Catalog Number: 67305-1-Ig

Featured Product



Basic Information

Catalog Number:

67305-1-Ig

Size:

1600 µg/ml

Source:

Mouse

Isotype:

IgG2a

Immunogen Catalog Number:

AG12164

GenBank Accession Number:

BC036087

GeneID (NCBI):

5813

UNIPROT ID:

Q00577

Full Name:

purine-rich element binding protein A

Calculated MW:

322 aa, 35 kDa

Observed MW:

35-40 kDa

Purification Method:

Protein A purification

CloneNo.:

1C6G4

Recommended Dilutions:

WB 1:5000-1:50000

Applications

Tested Applications:

WB, ELISA

Species Specificity:

Human, mouse, rat, pig

Positive Controls:

WB : HepG2 cells, pig brain tissue, rat brain tissue, mouse brain tissue, L02 cells, LNCaP cells, human placenta tissue, rat cerebellum tissue, mouse cerebellum tissue

Background Information

PURA, also named as Transcriptional activator protein Pur-alpha, is a 322 amino acid protein, which belongs to the PUR DNA-binding protein family and can form homodimer or heterodimer with PURB and heterotrimer with PURB and YBX1/Y-box protein 1. PURA is a probable transcription activator that specifically binds the purine-rich single strand of the PUR element located upstream of the MYC gene and may play a role in the initiation of DNA replication and in recombination.

Storage

Storage:

Store at -20°C. Stable for one year after shipment.

Storage Buffer:

PBS with 0.02% sodium azide and 50% glycerol pH 7.3.

Aliquoting is unnecessary for -20°C storage

For technical support and original validation data for this product please contact:

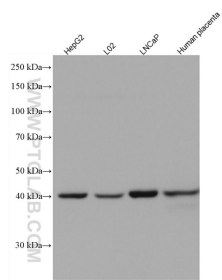
T: 4006900926

E: Proteintech-CN@ptglab.com

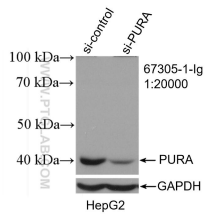
W: ptgcn.com

This product is exclusively available under Proteintech Group brand and is not available to purchase from any other manufacturer.

Selected Validation Data



Various lysates were subjected to SDS PAGE followed by western blot with 67305-1-Ig (PURA antibody) at dilution of 1:20000 incubated at room temperature for 1.5 hours.



WB result of PURA antibody (67305-1-Ig; 1:20000; incubated at room temperature for 1.5 hours) with sh-Control and sh-PURA transfected HepG2 cells.