

For Research Use Only

CD107a / LAMP1 Monoclonal antibody

Catalog Number: 67300-1-Ig **20 Publications**



Basic Information

Catalog Number: 67300-1-Ig	GenBank Accession Number: BC021288	Purification Method: Protein A purification
Concentration: 1000 ug/ml	GeneID (NCBI): 3916	CloneNo.: 3B2E9
Source: Mouse	ENSEMBL Gene ID: ENSG00000185896	Recommended Dilutions: WB 1:5000-1:50000 IHC 1:50-1:500 IF-P 1:200-1:800
Isotype: IgG2b	UNIPROT ID: P11279	
Immunogen Catalog Number: AG28869	Full Name: lysosomal-associated membrane protein 1	
	Calculated MW: 45 kDa	
	Observed MW: 90-120 kDa	

Applications

Tested Applications: WB, IHC, IF-P, ELISA	Positive Controls:
Cited Applications: WB	WB : HT-1080 cells, HeLa cells, HepG2 cells, Jurkat cells, THP-1 cells, MDA-MB-231 cells, JAR cells, K-562 cells, U-937 cells
Species Specificity: human	IHC : human liver cancer tissue, human lung cancer tissue
Cited Species: human, bovine	IF-P : human liver cancer tissue, human liver tissue
Note-IHC: suggested antigen retrieval with TE buffer pH 9.0; (*) Alternatively, antigen retrieval may be performed with citrate buffer pH 6.0	

Background Information

LAMP1 (also known as CD107a) is a 90-120 kDa heavily glycosylated membrane protein enriched in the lysosomal membrane. LAMP1 functions to provide selectins with carbohydrate ligands. This protein has also been shown to be a marker of degranulation on lymphocytes such as CD8+ and NK cells and may also play a role in tumor cell differentiation and metastasis.

Notable Publications

Author	Pubmed ID	Journal	Application
Zhouyangfan Peng	36131930	Front Immunol	WB
Hongzhu Zhang	39986118	Redox Biol	
Maoming Fei	39915357	Mol Neurobiol	

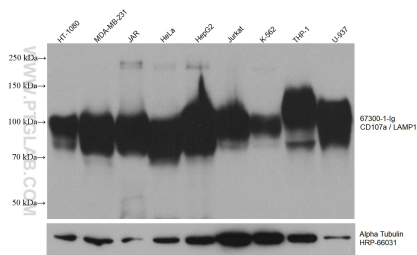
Storage

Storage:
Store at -20°C. Stable for one year after shipment.
Storage Buffer:
PBS with 0.02% sodium azide and 50% glycerol, pH7.3
Aliquoting is unnecessary for -20°C storage

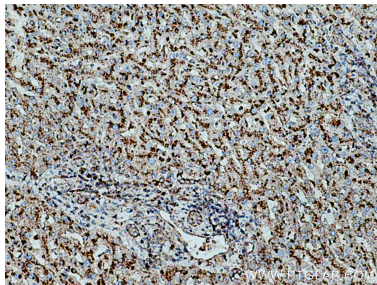
For technical support and original validation data for this product please contact:
T: 4006900926 E: Proteintech-CN@ptglab.com W: ptgcn.com

This product is exclusively available under Proteintech Group brand and is not available to purchase from any other manufacturer.

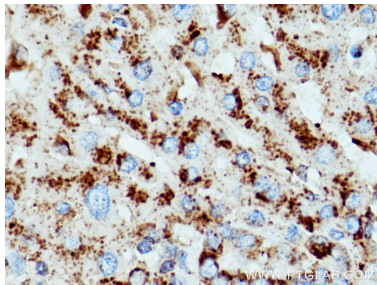
Selected Validation Data



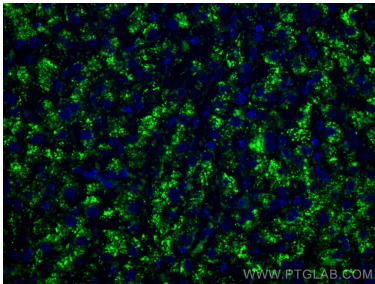
Various lysates were subjected to SDS PAGE followed by western blot with 67300-1-Ig (CD107a antibody) at dilution of 1:10000 incubated at room temperature for 1.5 hours. The membrane was stripped and reblotted with HRP-conjugated Alpha Tubulin Monoclonal antibody (HRP-66031) as loading control.



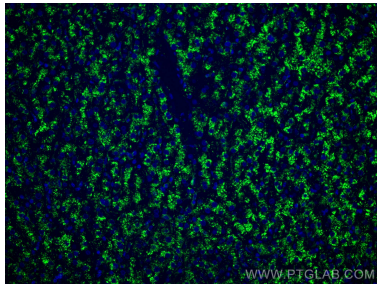
Immunohistochemical analysis of paraffin-embedded human liver cancer tissue slide using 67300-1-Ig (CD107a antibody) at dilution of 1:200 (under 10x lens). Heat mediated antigen retrieval with Tris-EDTA buffer (pH 9.0).



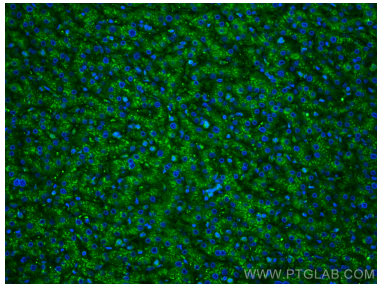
Immunohistochemical analysis of paraffin-embedded human liver cancer tissue slide using 67300-1-Ig (CD107a antibody) at dilution of 1:200 (under 40x lens). Heat mediated antigen retrieval with Tris-EDTA buffer (pH 9.0).



Immunofluorescent analysis of (4% PFA) fixed human liver cancer tissue using CD107a antibody (67300-1-Ig, Clone: 3B2E9) at dilution of 1:400 and CoraLite®488-Conjugated AffiniPure Goat Anti-Mouse IgG(H+L).



Immunofluorescent analysis of (4% PFA) fixed human liver cancer tissue using CD107a antibody (67300-1-Ig, Clone: 3B2E9) at dilution of 1:400 and CoraLite®488-Conjugated AffiniPure Goat Anti-Mouse IgG(H+L).



Immunofluorescent analysis of (4% PFA) fixed paraffin-embedded human liver tissue using CD107a / LAMP1 antibody (67300-1-Ig, Clone: 3B2E9) at dilution of 1:400 and Multi-rAb CoraLite® Plus 488-Goat Anti-Mouse Recombinant Secondary Antibody (H+L) (RGAM002). Heat mediated antigen retrieval with Tris-EDTA buffer (pH 9.0).