

# DOCK1 Monoclonal antibody

Catalog Number: 67296-1-Ig

## Basic Information

**Catalog Number:**

67296-1-Ig

**Size:**

1700 µg/ml

**Source:**

Mouse

**Isotype:**

IgG2a

**Immunogen Catalog Number:**

AG18069

**GenBank Accession Number:**

BC146857

**GeneID (NCBI):**

1793

**UNIPROT ID:**

Q14185

**Full Name:**

dedicator of cytokinesis 1

**Calculated MW:**

1865 aa, 215 kDa

**Observed MW:**

215 kDa

**Purification Method:**

Protein A purification

**CloneNo.:**

1C3F12

**Recommended Dilutions:**

WB 1:1000-1:6000

## Applications

**Tested Applications:**

WB, ELISA

**Species Specificity:**

Human, mouse, rat

**Positive Controls:**

WB : HeLa cells, HSC-T6 cells, HEK-293 cells, HepG2 cells, 4T1 cells, NIH/3T3 cells

## Background Information

DOCK1, also named as DOCK180, belongs to the DOCK family. It is involved in cytoskeletal rearrangements required for phagocytosis of apoptotic cells and cell motility. DOCK1 functions as a guanine nucleotide exchange factor (GEF), which activates Rac/Rho small GTPases by exchanging bound GDP for free GTP. Its GEF activity may be enhanced by ELMO1.

## Storage

**Storage:**

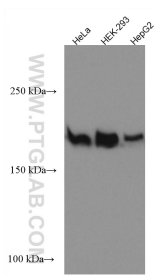
Store at -20°C. Stable for one year after shipment.

**Storage Buffer:**

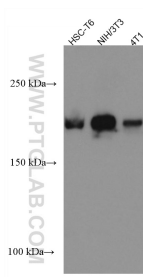
PBS with 0.02% sodium azide and 50% glycerol pH 7.3.

Aliquoting is unnecessary for -20°C storage

# Selected Validation Data



Various lysates were subjected to SDS PAGE followed by western blot with 67296-1-Ig (DOCK1 antibody) at dilution of 1:3000 incubated at room temperature for 1.5 hours.



Various lysates were subjected to SDS PAGE followed by western blot with 67296-1-Ig (DOCK1 antibody) at dilution of 1:3000 incubated at room temperature for 1.5 hours.