

For Research Use Only

luciferase Monoclonal antibody

Catalog Number: 67293-1-Ig 2 Publications



Basic Information

Catalog Number:

67293-1-Ig

Size:

1700 µg/ml

Source:

Mouse

Isotype:

IgG2a

Immunogen Catalog Number:

AG13000

GenBank Accession Number:

AY015993

GeneID (NCBI):

Full Name:

Calculated MW:

20 kDa

Purification Method:

Protein A purification

CloneNo.:

2D2E1

Recommended Dilutions:

WB 1:5000-1:50000

Applications

Tested Applications:

WB, ELISA

Cited Applications:

WB

Species Specificity:

Gaussia princeps

Cited Species:

human

Positive Controls:

WB : Recombinant protein, Recombinant protein

Background Information

This antibody is designed to detect the luciferase of luciferase (Gaussia princeps) tagged protein.

Notable Publications

Author	Pubmed ID	Journal	Application
Yifei Zhao	34730388	J Virol	WB
Junxin Mai	35597930	BMC Biotechnol	WB

Storage

Storage:

Store at -20°C.

Storage Buffer:

PBS with 0.02% sodium azide and 50% glycerol pH 7.3.

Aliquoting is unnecessary for -20°C storage

For technical support and original validation data for this product please contact:

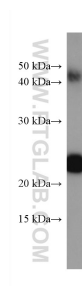
T: 4006900926

E: Proteintech-CN@ptglab.com

W: ptgcn.com

This product is exclusively available under Proteintech Group brand and is not available to purchase from any other manufacturer.

Selected Validation Data



Luciferase tagged protein were subjected to SDS PAGE followed by western blot with 67293-1-Ig (Luciferase antibody) at dilution of 1:20000 incubated at room temperature for 1.5 hours.