

For Research Use Only

PRLR Monoclonal antibody

Catalog Number: 67292-1-Ig **2 Publications**



Basic Information

Catalog Number: 67292-1-Ig	GenBank Accession Number: BC059392	Purification Method: Protein G purification
Source: Mouse	GeneID (NCBI): 5618	CloneNo.: 2E10G5
Isotype: IgG1	UNIPROT ID: P16471	Recommended Dilutions: WB: 1:500-1:2000 IHC: 1:200-1:500
Immunogen Catalog Number: AG28778	Full Name: prolactin receptor	
	Calculated MW: 622 aa, 70 kDa	
	Observed MW: 85-95 kDa	

Applications

Tested Applications: WB, IHC, ELISA	Positive Controls: WB : Jurkat cells, A431 cells, T-47D cells, 4T1 cells IHC : human breast cancer tissue,
Cited Applications: WB, IHC	
Species Specificity: human, mouse	
Cited Species: human	
Note-IHC: suggested antigen retrieval with TE buffer pH 9.0; (*) Alternatively, antigen retrieval may be performed with citrate buffer pH 6.0	

Background Information

PRLR belongs to the cytokine type I subfamily, which also includes receptors for leptin, leukemia inhibiting factor, erythropoietin and so on. PRLR has long and short forms at approximately 70 and 45 kDa, respectively, and the mature, glycosylated form of PRLR migrates at 85-95 kDa in human decidua and placenta (PMID: 18258683).

Notable Publications

Author	Pubmed ID	Journal	Application
Wenbo Yang	34539753	Front Genet	IHC
Mengjie Zhao	35359682	Front Vet Sci	WB

Storage

Storage:
Store at -20°C. Stable for one year after shipment.
Storage Buffer:
PBS with 0.02% sodium azide and 50% glycerol, pH7.3
Aliquoting is unnecessary for -20°C storage

For technical support and original validation data for this product please contact:

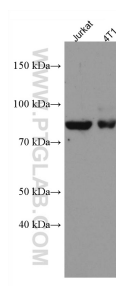
T: 4006900926

E: Proteintech-CN@ptglab.com

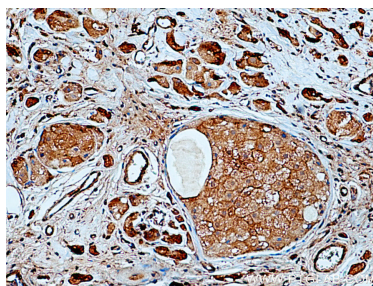
W: ptgcn.com

This product is exclusively available under Proteintech Group brand and is not available to purchase from any other manufacturer.

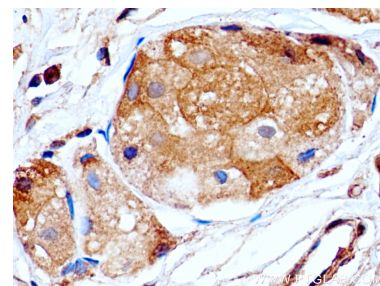
Selected Validation Data



Various lysates were subjected to SDS PAGE followed by western blot with 67292-1-Ig (PRLR antibody) at dilution of 1:1000 incubated at room temperature for 1.5 hours.



Immunohistochemical analysis of paraffin-embedded human breast cancer tissue slide using 67292-1-Ig (PRLR antibody) at dilution of 1:200 (under 10x lens). Heat mediated antigen retrieval with Tris-EDTA buffer (pH 9.0).



Immunohistochemical analysis of paraffin-embedded human breast cancer tissue slide using 67292-1-Ig (PRLR antibody) at dilution of 1:200 (under 40x lens). Heat mediated antigen retrieval with Tris-EDTA buffer (pH 9.0).